



Children's Board  
HILLSBOROUGH COUNTY

[www.ChildrensBoard.org](http://www.ChildrensBoard.org)

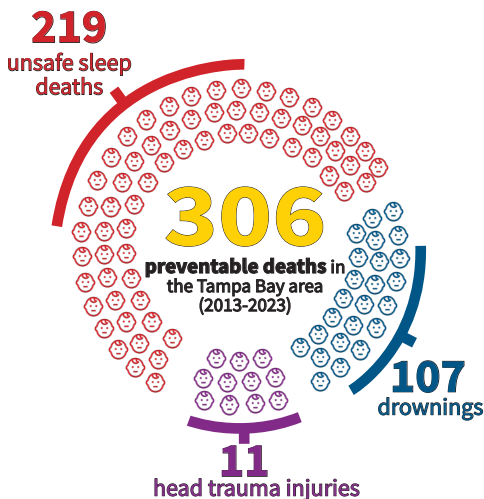
# 2025 Family Guide

for Services in Hillsborough County  
funded by your Children's Board

1002 East Palm Avenue • Tampa, FL 33605 • (813) 229-2884

The Children's Board invests in the health and well-being of all children and families in Hillsborough County. For parents and caregivers, children are the most precious gifts, and it's our responsibility to keep them safe. The Prevent Needless Deaths awareness campaign educates caregivers about 100% preventable child deaths related to drowning, unsafe infant sleep, and head trauma.

## Things that **kill kids** should come with warning signs



More infants die in adult beds than anywhere else.

Drowning kills more kids ages 1-4 than any other cause.

Shaking infants, even once, can kill or injure them for life.

**Learn to prevent an accidental death:**

*PreventNeedlessDeaths.com*





## **Board Members**

**Robin Wright DeLaVergne**  
Gubernatorial Appointee  
***Chair***

**The Honorable Katherine Essrig**  
Circuit Judge 13th Judicial Court  
***Vice Chair***

**Andrew J. Mayts Jr.**  
Gubernatorial Appointee  
***Secretary/Treasurer***

**Van Ayers**  
Superintendent Hillsborough County Public Schools

**Megan Proulx Dempsey**  
Gubernatorial Appointee

**Gwen Myers**  
District 3 Hillsborough County Commission

**Edwin Narain**  
Gubernatorial Appointee

**Sarah Naumowich**  
Gubernatorial Appointee

**Beth Pasek**  
Community Development Administrator Suncoast Region  
Department of Children and Families

**Henry “Shake” Washington**  
School Board Member  
Hillsborough County Public Schools

---

**Rebecca Bacon**  
Executive Director



# Table of Contents

## **About the Children’s Board of Hillsborough County**

Mission .....	2
Vision.....	2
Conference Center.....	2
Our Budget.....	3

## **Children’s Board Family Resource Centers**

Children’s Board Family Resource Centers.....	4
---	---

## **Achieve Plant City**

Literacy is Fun Together .....	6
--------------------------------	---

## **Bay Area Legal Services**

Housing Stability Program .....	7
Lawyers Helping Kids .....	8

## **Big Brothers Big Sisters of Tampa Bay**

1-to-1 Mentoring (Elementary) .....	9
1-to-1 Mentoring (Middle) .....	10

## **Boys & Girls Clubs of Tampa Bay**

After-Zone Elementary School Initiative .....	11
After-Zone Middle School Initiative .....	12
After-Zone Middle School Initiative at Giunta Middle .....	13
Brandon Art Masters (BAM!) .....	14

## **Champions for Children**

Baby Bungalow.....	15
Family Focus .....	16
Layla’s House .....	17
Parents as Teachers (PAT).....	18

## **Children’s Home Network**

Caregiver Support Services.....	19
Kinship Hillsborough.....	20
Reaching and Inspiring Students Everywhere (RAISE) .....	21
Supporting and Empowering Educational and Developmental Services (SEEDS) .....	22

## **Corporation to Develop Communities Of Tampa, Inc. (CDC of Tampa)**

Wealth Builders Program .....	23
-------------------------------	----



# Table of Contents

<b>Crisis Center of Tampa Bay</b>	
Successful Families.....	24
<b>Dawning Family Services</b>	
A Path to Prevention.....	25
Housing for Success.....	26
<b>Early Childhood Council of Hillsborough County</b>	
Community Developmental Screening.....	27
Inclusion Support Services.....	28
<b>Early Learning Coalition of Hillsborough County</b>	
School Readiness Funding.....	29
<b>Easterseals Florida, Inc.</b>	
Early Learning and Intervention Program.....	30
The Incredible Years.....	31
<b>Family Enrichment Center, The</b>	
Autism Is Real.....	32
Kinship Care.....	33
Motivated Minds.....	34
<b>Family Healthcare Foundation, The</b>	
Connecting Kids to Care.....	35
<b>Florida Education Fund</b>	
CodeMasters (Countywide).....	36
CodeMasters (Strategic Initiative).....	37
<b>Florida State University</b>	
Successful Start.....	38
<b>Girl Scouts of West Central Florida</b>	
Girl Scout Troop Program.....	39
<b>Glazer Children's Museum</b>	
Children's Board Free Tuesday.....	40
Learn & Play Tampa Bay.....	41
<b>Gulf Coast Jewish Family and Community Services</b>	
Good Afternoon Friends and Amigos.....	42
Padres De Crianza.....	43
Teen Parent Engagement Program.....	44



# Table of Contents

## **Healthy Start Coalition of Hillsborough County**

Healthy Families Hillsborough.....	45
HealthySteps Hillsborough .....	46
Safe Baby Plus .....	47

## **High 5, Inc.**

Water Warriors .....	48
----------------------	----

## **Hillsborough Community College Fund**

Quality Early Education System.....	49
-------------------------------------	----

## **Hillsborough Education Foundation, Inc.**

Tech Connect .....	50
--------------------	----

## **Hispanic Services Council**

La Red de Padres Activos/Network of Active Parents .....	51
--	----

## **Housing Authority of the City of Tampa (THA)**

Building Family Financial Skills .....	52
Building Hope .....	53
Village Link Up .....	54
Youth Success .....	55

## **Instruments 4 Life Inc.**

Music Outreach Program.....	56
-----------------------------	----

## **Joshua Way of Hope, Inc.**

Achievers.....	57
Building a Stronger Me .....	58
Life Skills 360 Training Institute .....	59

## **Just Initiative**

Woven Empowerment – WE Program.....	60
-------------------------------------	----

## **Metropolitan Ministries**

C.R.E.A.T.E. School Age Program .....	61
First Hug.....	62
Pathways to Hope.....	63

## **Museum of Science and Industry, Inc.**

Children’s Board Family Resource Center in Plant City .....	64
---	----

## **One More Child**

One More Child Family Support.....	65
------------------------------------	----



# Table of Contents

<b>Parents and Children Advance Together (PCAT) Literacy Ministries</b>	
South County Literacy Initiative .....	66
Sulphur Springs Literacy Initiative .....	67
<b>Positive Family Partners, Inc.</b>	
Learning Connections .....	68
<b>Positive Spin</b>	
Empowering a Community with Hope (E.A.C.H. One) .....	69
<b>Preserve Vision Florida</b>	
Children’s Vision Health and Safety Services .....	70
<b>REACHUP, Inc.</b>	
Giving Resources and Opportunities with Trust and Hope (GROWTH) with Doulas and Dads .....	71
<b>Redefiners World Languages</b>	
Global Explorers Program .....	72
Multilingual Citizens Program (MCP) .....	73
<b>Renaissance Learning</b>	
myON Reader .....	74
<b>Resource Empowerment Centre</b>	
Coaching Dreams Into Success .....	75
Villages CAFÉ .....	76
<b>Rooted In Play Corp</b>	
Popup Adventure Playground Project .....	77
<b>Seniors in Service of Tampa Bay</b>	
Foster Grandparent Program with Readers in Motion .....	78
<b>Skills Center, The</b>	
Middle School Youth Opportunity .....	79
<b>Spring of Tampa Bay, The</b>	
Family Safety from Domestic Violence .....	80
<b>St. Joseph’s Children’s Hospital</b>	
Mobile Health and Safety Education .....	81
<b>St. Joseph’s Women’s Hospital</b>	
Community Maternity Clinic .....	82
Supporting Motherhood and More .....	83



## Table of Contents

<b>Tampa Heights Junior Civic Association</b>	
THJCA's Garden and Art Wellness Program.....	84
<b>Tampa Kiwanis Foundation</b>	
Kiwanis StoryWalk.....	85
<b>Tampa Metropolitan Area YMCA</b>	
Operation Strong Families .....	86
Sulphur Springs YMCA Out of School Time .....	87
<b>Tampa Museum of Art</b>	
Children's Board Free Family Day .....	88
<b>United Food Bank and Services of Plant City</b>	
F.E.E.D. Food, Educating, Empowerment for Development.....	89
<b>University Area Community Development Corporation</b>	
Get Moving! Mind, Body, Soul .....	90
Get Moving! Water Safety .....	91
STEPS for the University Area .....	92
<b>University of South Florida Board of Trustees, The</b>	
Helping Our Toddlers, Developing Our Children's Skills (HOTDOCS) & Developing Our Children's Skills K-5 (DOCS K-5) .....	93
Hillsborough HIPPY Parent Involvement Project .....	94
Program-Wide Positive Behavior Support (PWPBS) .....	95
Trauma-Informed Schools: Tiered Interventions .....	96





## **Children's Board of Hillsborough County Focus Areas**

The Children's Board of Hillsborough County has been investing in children and families for 37 years. Created by referendum in 1988, the Children's Board funds programs and services at the community level to support children and families. Children's Board investments ensure:

### **Children are Developmentally on Track:**

Early Identification of developmental needs for children birth to age five is essential for optimizing a child's learning potential and allows caregivers to learn more about their child's development.

### **Children are Healthy and Safe:**

Early preventative health and education; preparing a family to develop nurturing and healthy habits which are enhanced by coordination with community partners including healthcare systems and primary care providers.

### **Children are Ready to Learn and Succeed:**

School readiness and academic support for children is designed in a way that fosters academic readiness by age eight. Quality early learning promotes early caregiver involvement and professional development for early care educators. Activities may support character development, provide positive role modeling, and motivate students to learn in safe environments.

### **Family Support:**

Support for the whole family by developing informal supports, stability and overall well-being. These relationships establish the foundation for secure attachments and future physical, cognitive and social-emotional health.



## Governing Board

The Children's Board is governed by ten Board members from the local community. Five are "ex-officio", meaning they serve by virtue of the office they hold. The remaining five members of the Board are Hillsborough County citizens appointed by the Governor of Florida. The Governing Board hires the Executive Director, who is responsible for the leadership and management of the agency.

## Mission

The Children's Board of Hillsborough County invests in partnerships and quality programs to support the success of all children in Hillsborough County.

## Vision

Hillsborough County will be recognized as one of the top places in the nation to raise children.

## Conference Center

Our administrative building on Palm Avenue also serves as a conference center available at no cost to neighborhood, community, and civic organizations. Free parking, easy access to public transportation, and a central location make it a perfect space for community events. For more information about using our conference center, call (813) 229-2884 or email [reservations@childrensboard.org](mailto:reservations@childrensboard.org).

For More Information  
**PLEASE SCAN**



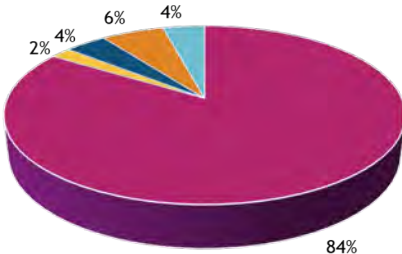
# Our Budget

The Children’s Board of Hillsborough County oversees a budget of \$91.6 million. The chart below represent total revenue and expenditures for Fiscal Year 2025.

## Where the Money Comes From

### Revenue Sources

Ad-Valorem Taxes .....	73,920,760
Investment Income .....	5,579,649
Administrative Services Organization (ASO) .....	600,000
Other Community Partner Funding.....	410,000
Miscellaneous Income.....	11,000
<b>Total Revenue .....</b>	<b>80,521,409</b>
Fund Balance.....	11,124,199
<b>Total Budget .....</b>	<b>91,645,608</b>



- Total Program Expenditures
- Mandatory Government Fees
- Direct Operating Expenditures
- Administrative Operating Expenditures
- Capital



# CHILDREN'S BOARD FAMILY RESOURCE CENTERS

## *Children's Board Family Resource Centers*

### **Program Description**

The Children's Board Family Resource Centers provide opportunities for parents or caregivers and their children to participate in parent / child developmental playgroups, developmental screenings, and health and safety education. In addition, pediatric well-child visits, immunizations and hearing or vision screening are provided for qualifying families. The centers have relationships with community partners and volunteers to focus on supporting families with children from birth to eighteen years old. The centers are designed to support families and communities become happier, healthier, and stronger.

### **Locations:**

#### **Brandon**

1271 Kingsway Road  
Brandon, FL – 33510  
(813) 740-4634

#### **Plant City**

301 North Palmer Street  
Plant City, FL – 33563  
(813) 752-8700

#### **Central Tampa**

1002 East Palm Avenue  
Tampa, FL – 33605  
(813) 204-1741

#### **North Tampa**

116 West Fletcher Avenue  
Tampa, FL – 33612  
(813) 558-1877

#### **Doretha Wynn Edgecomb Children's Board Family Resource Center in Temple Terrace**

5892 East Fowler Avenue  
Temple Terrace, FL – 33617  
(813) 435-3032

#### **South County**

3030 East College Avenue  
Ruskin, FL – 33570  
(813) 641-5600

#### **Town 'N Country**

7520 West Waters Avenue, Suite #8  
Tampa, FL – 33615  
(813) 356-1703



# CHILDREN'S BOARD FAMILY RESOURCE CENTERS

*(continued from previous page)*

**Target Population Served:** Families with children from birth to 18

**Service Area/Geographic Focus:** Hillsborough County

**Bilingual Services:** Yes – Spanish

**Funding Amount:** \$3,296,557

**Contact Information:**

**Address:** Lutheran Services Florida  
3627 West Waters Avenue  
Tampa, FL 33614

**Phone:** (813) 704-1741

**Website:** [www.familysupporthc.org](http://www.familysupporthc.org)

**Social Media:** Facebook – Children's Board Family Resource Centers  
Instagram – @cbfamilyresourcecenters

**Subcontracts:** None



***Literacy Is Fun Together*****Program Description**

The Literacy Is Fun Together (LIFT) program supports family literacy. Parents are engaged in educational activities with their children. The program offers early childhood education classes, developmental screenings, literacy skill assessments, and tutoring.

**Target Population Served:** Children eighteen months through 5th grade and their parents/caregivers

**Service Area/Geographic Focus:** East Hillsborough County

**Bilingual Services:** Yes – Spanish

**Funding Amount:** \$492,130

**Contact Information:**

**Address:** 202 West Reynolds Street  
Plant City, FL 33563

**Phone:** (813) 752-4010

**Website:** [www.achieveplantcity.org](http://www.achieveplantcity.org)

**Social Media:** Facebook – Achieve Plant City  
Instagram – @achieve\_plant\_city

**Subcontracts:** None



## ***Housing Stability Program***

### **Program Description**

Bay Area Legal Service's Housing Stability program provides renters in Hillsborough County with free legal advice and services, including legal representation in legal disputes with their landlord or Tampa Housing Authority when applicable, to prevent eviction or other housing instability. When appropriate, renters are also evaluated for any third-party rental assistance programs they may qualify for, and are provided referrals and support in applying to applicable rental assistance programs. Renters are also provided with free holistic social work services and ongoing case management support to address any further barriers to housing stability.

**Target Population Served:** Hillsborough County renters with children ages from birth to twelve in a household

**Service Area/Geographic Focus:** Hillsborough County

**Bilingual Services:** Yes, access to free, confidential translation and interpreting services for any language

**Funding Amount:** \$81,279

### **Contact Information:**

**Address:** 1302 North 19th Street  
Suite 400  
Tampa, FL 33605

**Phone:** (813) 232-1343 ext. 100 or (800) 625-2257  
to apply for services

**Website:** [www.bals.org](http://www.bals.org)

**Social Media:** Facebook – Bay Area Legal Services  
X – @bay\_area\_legal  
Instagram – @bayarealegalservices

**Subcontracts:** None



***Lawyers Helping Kids*****Program Description**

Lawyers Helping Kids supports children and families with services related to housing, public benefits, employment, domestic violence, paternity, custody, child support, guardianship, and adoption. In addition, eligible families can be referred to Wheels of Success to meet their transportation needs.

**Target Population Served:** Pregnant women and families with children birth through 5th grade

**Service Area/Geographic Focus:** Hillsborough County

**Bilingual Services:** Yes – Spanish

**Funding Amount:** \$782,079

**Contact Information:**

**Address:** 1302 North 19th Street  
Suite 400  
Tampa, FL 33605

**Phone:** (813) 232-1343

**Website:** [www.bals.org](http://www.bals.org)

**Social Media:** Facebook – Bay Area Legal Services  
X – @bay\_area\_legal  
Instagram – @bayarealegalservices

**Subcontracts:** None





# BIG BROTHERS BIG SISTERS OF TAMPA BAY

## *1-to-1 Mentoring (Elementary)*

### **Program Description**

The 1-to-1 Comprehensive Mentoring Program provides professionally supported mentoring services to children and youth who can benefit from a caring and supportive relationship. The program supports children and families by connecting a “Little” (youth) with a “Big” (mentor) to achieve a safe, long, and strong match. Volunteers, parents, mentors, and the youth themselves must commit to actively participate for a minimum of fifteen months or longer to maximize the outcome.

**Target Population Served:** Elementary School age students

**Service Area/Geographic Focus:** Hillsborough County

**Bilingual Services:** Yes – Spanish

**Funding Amount:** \$297,500

### **Contact Information:**

**Address:** 5555 West Waters Avenue  
Suite 607  
Tampa, FL 33634

**Phone:** (813) 769-3600

**Website:** [www.bbbstampabay.org](http://www.bbbstampabay.org)

**Social Media:** Facebook – Big Brothers Big Sisters of Tampa Bay  
X – @bbbs\_tampabay  
Instagram – @bbbs\_tampabay

**Subcontracts:** None



## *1-to-1 Mentoring (Middle)*

### **Program Description**

The 1-to-1 Comprehensive Mentoring Program provides professionally supported mentoring services to children and youth who can benefit from a caring and supportive relationship. The program supports children and families by connecting a “Little” (youth) with a “Big” (mentor) to achieve a safe, long, and strong match. Volunteers, parents, mentors, and the youth themselves must commit to actively participate for a minimum of fifteen months or longer to maximize the outcome.

**Target Population Served:** Middle School age students

**Service Area/Geographic Focus:** Hillsborough County

**Bilingual Services:** Yes – Spanish

**Funding Amount:** \$297,500

### **Contact Information:**

**Address:** 5555 West Waters Avenue  
Suite 607  
Tampa, FL 33634

**Phone:** (813) 769-3600

**Website:** [www.bbbstampabay.org](http://www.bbbstampabay.org)

**Social Media:** Facebook – Big Brothers Big Sisters of Tampa Bay  
X – @bbbs\_tampabay  
Instagram: @bbbs\_tampabay

**Subcontracts:** None



## *After-Zone Elementary School Initiative*

### **Program Description**

The After-Zone Elementary School program provides after school support to students every day school is in session. This includes homework assistance, character development programs, health and wellness activities and academic support. The program runs when school dismisses until 6pm. Summer programs will be offered if the school is open and will run Monday through Friday. Included in summer programs are educational and fun field trips, lunch and snack, sports and character programs and continued academic support.

**Target Population Served:** Children in kindergarten through 5th grade

**Service Area/Geographic Focus:** DeSoto, Morgan Woods and Mort Elementary Schools

**Bilingual Services:** Yes – Spanish

**Funding Amount:** \$812,211

### **Contact Information:**

**Address:** 1307 North MacDill Avenue  
Tampa, FL 33607

**Phone:** (813) 769-7533

**Website:** [www.bgctampa.org](http://www.bgctampa.org)

**Social Media:** Facebook – Boys and Girls Clubs of Tampa Bay  
X – @bgctampa  
Instagram – @bgctampa

**Subcontracts:** None



## *After-Zone Middle School Initiative*

### **Program Description**

The After-Zone Middle School Initiative provides out of school time and summer programming for youth. The program supports children and families through service projects, STEM learning, cultural art activities, leadership development, fitness, and the exploration of career fields or colleges aligned with the youths interests. Power Hour: Making Minutes Count will be offered before school begins and will be dedicated to homework assistance and tutoring.

**Target Population Served:** Students in 6th, 7th, or 8th grade at Pierce, Marshall, Shields, or Tomlin Middle School

**Service Area/Geographic Focus:** Town 'N Country, Plant City, Ruskin, and Wimauma

**Bilingual Services:** Yes – Spanish

**Funding Amount:** \$588,000

### **Contact Information:**

**Address:** 1307 North MacDill Avenue  
Tampa, FL 33607

**Phone:** (813) 769-7533

**Website:** [www.bgctampa.org](http://www.bgctampa.org)

**Social Media:** Facebook – Boys and Girls Clubs of Tampa Bay  
X – @bgctampa  
Instagram – @bgctampa

**Subcontracts:** None



## *After-Zone Middle School Initiative at Giunta Middle*

### **Program Description**

The After-Zone Middle School Initiative provides out of school time and summer programming for youth. The program supports children and families through service projects, STEM learning, cultural art activities, leadership development, fitness, and the exploration of career fields or colleges aligned with the youth's interests. Power Hour: Making Minutes Count will be offered before school begins and will be dedicated to homework assistance and tutoring.

**Target Population Served:** Students in 6th to 8th grade

**Service Area/Geographic Focus:** Giunta Middle School

**Bilingual Services:** Yes – Spanish

**Funding Amount:** \$238,993

### **Contact Information:**

**Address:** 1307 North MacDill Avenue  
Tampa, FL 33607

**Phone:** (813) 875-5771

**Website:** [www.bgctampa.org](http://www.bgctampa.org)

**Social Media:** Facebook – Boys and Girls Clubs of Tampa Bay  
X – @bgctampa  
Instagram – @bgctampa

**Subcontracts:** None



***Brandon Art Masters! (BAM!)*****Program Description**

Brandon Art Masters provides elementary school students a high-quality art instruction and exposure after-school program. Working with professional artists and materials, students explore a variety of art mediums and showcase their work to the public two times per year. This program includes art-focused field trips.

**Target Population Served:** Children in kindergarten through 5th grade

**Service Area/Geographic Focus:** Carey Brandon Club

**Bilingual Services:** No

**Funding Amount:** \$95,566

**Contact Information:**

**Address:** 510 East Sadie Street  
Brandon, FL 33510

**Phone:** (813) 444-0375

**Website:** [www.bgctampa.org](http://www.bgctampa.org)

**Social Media:** Facebook – Boys and Girls Clubs of Tampa Bay  
X – @bgctampa  
Instagram – @bgctampa

**Subcontracts:** None



***Baby Bungalow*****Program Description**

Baby Bungalow is an early childhood resource center for parents and caregivers. New and experienced parents alike can benefit from the wide variety of adult-child playgroups, workshops, developmental screenings and other activities.

**Target Population Served:** All services are for “any baby, any family”

**Service Area/Geographic Focus:** Hillsborough County

**Bilingual Services:** Yes – Spanish

**Funding Amount:** \$301,134

**Contact Information:**

**Address:** 3108 West Azelee Street  
Tampa, FL 33609

**Phone:** (813) 673-4646

**Website:** [www.cfctb.org/program/baby-bungalow](http://www.cfctb.org/program/baby-bungalow)

**Social Media:** Facebook – [cfcbabybungalow](https://www.facebook.com/cfcbabybungalow)  
X – [@cfctampabay](https://twitter.com/cfctampabay)  
Instagram – [@cfc\\_tampabaybabycafe](https://www.instagram.com/cfc_tampabaybabycafe)

**Subcontracts:** None

## *Family Focus*

### **Program Description**

The Family Focus program provides prenatal and postpartum education and support to adults with substance abuse and behavioral health concerns who are pregnant or are parenting children birth through middle school. The program will support children and families by offering intensive case management services, developmental screenings, parenting education and support to promote the birth of healthy newborns. The program is designed to support the positive relationships of moms, dads, and child to promote the birth of substance free babies.

**Target Population Served:** Pregnant and parenting mothers and fathers

**Service Area/Geographic Focus:** Participants in treatment at Cove Behavioral Health in Hillsborough County

**Bilingual Services:** Yes – Spanish

**Funding Amount:** \$517,315

### **Contact Information:**

**Address:** 4422 East Columbus Drive  
Tampa, FL 33605

**Phone:** (813) 673-4646 ext. 7000

**Website:** [www.cfctb.org](http://www.cfctb.org)

**Social Media:** Facebook – Champions for Children  
X – @cfctampabay  
Instagram – @cfctampabay

**Subcontracts:** Cove Behavioral Health, Inc.



## *Layla's House*

### **Program Description**

Layla's House is in the heart of Sulphur Springs and is a community-based learning and resource center that provides playgroups, workshops, developmental checkups, community activities and support for parents and caregivers with children birth to age five as well as expectant moms and dads.

**Target Population Served:** All services are for “any baby, any family” in Hillsborough County

**Service Area/Geographic Focus:** Hillsborough County

**Bilingual Services:** Yes – Spanish

**Funding Amount:** \$506,725

### **Contact Information:**

**Address:** 1506 East Eskimo Avenue  
Tampa, FL 33604

**Phone:** (813) 443-5004

**Website:** [www.cfctb.org](http://www.cfctb.org)

**Social Media:** Facebook – Layla's House  
X – @cfctampabay  
Instagram – @cfctampabay

**Subcontracts:** None



## *Parents as Teachers (PAT)*

### **Program Description**

The Parents as Teachers (PAT) program provides families with a personal parent educator who visits the home and support groups meet monthly. PAT provides learning activities for the child, models age appropriate activities, introduces the use of books into play, and hosts other fun activities to prepare the child for school. The program offers screenings in overall development.

**Target Population Served:** Parents and caregivers of young children birth through kindergarten

**Service Area/Geographic Focus:** Hillsborough County

**Bilingual Services:** Yes – Spanish and Creole

**Funding Amount:** \$2,051,979

### **Contact Information:**

**Address:** 3108 West Azele Street  
Tampa, FL 33609

**Phone:** (813) 673-4646

**Website:** [www.cfctb.org](http://www.cfctb.org)

**Social Media:** Facebook – Champions for Children  
Facebook – Parents As Teachers Tampa  
X – @cfctampabay  
Instagram – @cfctampabay

**Subcontracts:** None

## ***Caregiver Support Services***

### **Program Description**

Caregiver Support Services (CSS) offers comprehensive respite support to caregivers and their families. The program serves children between the ages of birth through 13 who have physical disabilities, social-emotional challenges, or developmental delays/disabilities and caregivers who are experiencing acute situational stressors leading to a strained family system. The philosophy of the CSS program through its wraparound, home visiting approach is to consider the whole family unit, not simply the identified child or caregiver, knowing the family unit is a highly integrated complex system that must be addressed holistically. Through “respite” or short-term childcare services, caregivers are provided a much-needed break so they can focus on their own health needs. Caregivers are also connected to additional resources and services in their community ensuring they have all the supports they need to care for their family and build resilience so the family can thrive and function at its very best.

**Target Population Served:** Any parent or caregiver caring full-time for a child, birth through 13 years of age

**Service Area/Geographic Focus:** Hillsborough County

**Bilingual Services:** Yes – English and Spanish

**Funding Amount:** \$1,178,068

### **Contact Information:**

**Address:** 510 Vondenburg Drive  
Suite 208  
Brandon, FL 33511

**Phone:** (813) 897-3652

**Website:** [www.childrenshomenetwork.org](http://www.childrenshomenetwork.org)

**Social Media:** Facebook – Childrens Home Network  
X – @childrenhomenet  
Instagram – @childrenhomenet

**Subcontracts:** None



***Kinship Hillsborough*****Program Description**

The Kinship Hillsborough program supports children residing with a relative caregiver or another caring adult by providing case management, support groups, and developmental screenings. The program provides in-home wellness services to caregivers with health-related concerns. In addition, Bay Area Legal Services provides education on custody matters, and supports family stability to ensure the safety, social-emotional and academic needs of the children are met.

**Target Population Served:** Relative and non-relative caregivers with children birth through enrolled in middle school

**Service Area/Geographic Focus:** Hillsborough County

**Bilingual Services:** Yes – Spanish

**Funding Amount:** \$659,525

**Contact Information:**

**Address:** 3450 Buschwood Park Drive  
Suite 195  
Tampa, FL 33618

**Phone:** (888) 920-8761 or (813) 901-3409

**Website:** [www.childrenshomenetwork.org](http://www.childrenshomenetwork.org)

**Social Media:** Facebook – Childrens Home Network  
X – @childrenhomenet  
Instagram – @childrenhomenet

**Subcontracts:** None



***Reaching and Inspiring Students Everywhere (RAISE)*****Program Description**

Reaching and Inspiring Students Everywhere (RAISE) provides children from birth through 3rd grade and their families with access to services that promote positive behavioral, developmental, and educational success. The program works with children who are at risk of having experienced trauma, presenting challenging behaviors, developmental delay or a diagnosed disability affecting a child's readiness for school, or academic performance.

**Target Population Served:** Children birth to 3rd grade and their families

**Service Area/Geographic Focus:** Hillsborough County

**Bilingual Services:** Yes – Spanish

**Funding Amount:** \$1,379,010

**Contact Information:**

**Address:** 3450 Buschwood Park Drive  
Suite 195  
Tampa, FL 33618

**Phone:** (813) 605-2354

**Website:** [www.childrenshomenetwork.org](http://www.childrenshomenetwork.org)

**Social Media:** Facebook – Childrens Home Network  
X – @childrenhomenet  
Instagram – @childrenhomenet

**Subcontracts:** None

***Supporting and Empowering Educational and  
Developmental Services (SEEDS)***

**Program Description**

SEEDS provides case management services and referrals with an emphasis on engaging families in their child's educational, social and developmental experiences. The program works with teachers to coordinate services and support success in school. It offers a family assessment, literacy support services for students and shares community resources with all families.

**Target Population Served:** Children birth to 5th grade and their families

**Service Area/Geographic Focus:** Hillsborough County

**Bilingual Services:** Yes – Spanish and Creole

**Funding Amount:** \$2,825,299

**Contact Information:**

**Address:** 3450 Buschwood Park Drive  
Suite 195  
Tampa, FL 33618

**Phone:** (813) 901-3409

**Website:** [www.childrenshomenetwork.org](http://www.childrenshomenetwork.org)

**Social Media:** Facebook – Childrens Home Network  
X – @childrenhomenet  
Instagram – @childrenhomenet

**Subcontracts:** None





**CORPORATION TO DEVELOP  
COMMUNITIES OF TAMPA, INC.  
CDC OF TAMPA**

***Wealth Builders Program***

**Program Description**

The CDC of Tampa's Wealth Builders Program aims to empower community members and enrich their future by guiding them toward financial stability. We achieve this by offering support services that facilitate the successful completion of educational and training programs, help secure higher-paying employment, and impart essential financial principles. These strategies are crucial for ensuring the financial security of our residents.

**Target Population Served:** Expectant parents/caregivers and parents/caregivers with children from birth to fourteen years of age

**Service Area/Geographic Focus:** Zip codes 33603 or 33610

**Bilingual Services:** Yes – Spanish

**Funding Amount:** \$400,000

**Contact Information:**

**Address:** Chloe Coney Urban Enterprise Center (CDC of Tampa)  
1907 East Hillsborough Avenue  
Suite 100  
Tampa, FL 33610

**Phone:** (813) 231-4362

**Website:** [www.cdcoftampa.org](http://www.cdcoftampa.org)

**Social Media:** Facebook – CDC of Tampa  
X – @cdcoftampa  
Instagram – @cdcoftampa

**Subcontracts:** None



## *Successful Families*

### **Program Description**

The Successful Families program provides bilingual, culturally competent, community-based services for children and families in East and South County communities. We coordinate access to needed services including counseling and parenting support services including counseling and parenting support services through the Nurturing Parenting Programs.

**Target Population Served:** Families with children birth to 8th grade

**Service Area/Geographic Focus:** East (Plant City/Dover) and South (Wimauma/Ruskin) Hillsborough County

**Bilingual Services:** Yes – Spanish

**Funding Amount:** \$723,342

### **Contact Information:**

**Address:** One Crisis Center Plaza  
Tampa, FL 33613

**Phone:** (813) 490-5490

**Website:** [www.CrisisCenter.com](http://www.CrisisCenter.com)

**Social Media:** Facebook – Crisis Center of Tampa Bay  
Instagram – @Crisis Center of Tampa Bay

**Subcontracts:** None





## *A Path to Prevention*

### **Program Description**

A Path to Prevention provides case management services to families who are at-risk of being homeless by providing services to help them maintain or access stable housing. Case Managers also help them apply for public benefits, obtain identity documents, employment guidance, referrals to community resources, as well as support with legal and financial assistance.

**Target Population Served:** Pregnant women and families with children birth to eighteen

**Service Area/Geographic Focus:** Hillsborough County

**Bilingual Services:** Yes – Spanish

**Funding Amount:** \$472,534

### **Contact Information:**

**Address:** 6718 North Armenia Avenue  
Tampa, FL 33604

**Phone:** (813) 875-2024

**Website:** [www.DawningFamilyServices.org](http://www.DawningFamilyServices.org)

**Social Media:** Facebook – DawningFamilyServices  
X – @dawningfs  
Instagram – @dawningfs

**Subcontracts:** None

## *Housing for Success*

### **Program Description**

Housing for Success provides emergency shelter and support services for families and children under the age of 18 who are experiencing homelessness. Families receive individualized, wrap around case management to assist them in ending their homelessness through housing search and placement; financial assistance for housing; referrals to community resources; and post-shelter services to ensure stability.

**Target Population Served:** Homeless families with children birth to eighteen

**Service Area/Geographic Focus:** Hillsborough County

**Bilingual Services:** Yes – Spanish

**Funding Amount:** \$336,381

### **Contact Information:**

**Address:** 6718 North Armenia Avenue  
Tampa, FL 33604

**Phone:** (813) 875-2024

**Website:** [www.DawningFamilyServices.org](http://www.DawningFamilyServices.org)

**Social Media:** Facebook – DawningFamilyServices  
X – @dawningfs  
Instagram – @dawningfs

**Subcontracts:** None

***Community Developmental Screening***

**Program Description**

The Community Developmental Screening Program provides monthly community-based developmental screening events for children birth to five years of age. When warranted, the program connects families of children with developmental concerns to appropriate follow-up services (e.g. formal evaluation providers, early intervention, or community based supports). Screenings are conducted in the areas of vision, hearing, speech/language, behavior, and overall development.

**Target Population Served:** Children birth to five years of age who are not yet in kindergarten

**Service Area/Geographic Focus:** Hillsborough County

**Bilingual Services:** Yes – Spanish

**Funding Amount:** \$1,039,836

**Contact Information:**

**Address:** P.O. Box 130449  
Tampa, FL 33681

**Email:** [screeningmanager@ecctampabay.org](mailto:screeningmanager@ecctampabay.org)

**Website:** [www.ecctampabay.org](http://www.ecctampabay.org)

**Social Media:** Facebook – Ecctampabay

**Subcontracts:** None

***Inclusion Support Services***

**Program Description**

Inclusion Support Services provides child care centers and family child care homes with resources and training to support early childhood development and/or behavioral concerns. Services include on-site observations of children/teachers/classrooms to develop an intervention plan based on strengths, needs, and accommodations for an inclusive setting. An individualized in-home parent education service will bridge continuity of care between the educational setting to the home.

**Target Population Served:** Early childhood professionals and families with children, birth to five years of age, in child care center or family day care home

**Service Area/Geographic Focus:** Hillsborough County

**Bilingual Services:** Yes – Spanish

**Funding Amount:** \$629,305

**Contact Information:**

**Address:** P.O. Box 130449  
Tampa, FL 33681

**Email:** [inclusionmanager@ecctampabay.org](mailto:inclusionmanager@ecctampabay.org)

**Website:** [www.ecctampabay.org](http://www.ecctampabay.org)

**Social Media:** Facebook – Ecctampabay

**Subcontracts:** None

***School Readiness Funding***

**Program Description**

The School Readiness program provides financial assistance to eligible families so they may have access to a network of early care and education programs to help ensure they enter kindergarten ready to succeed. Parents may apply online at [www.elchc.org](http://www.elchc.org).

**Target Population Served:** Children birth to nine years of age. Priority is given to children whose parents are economically disadvantaged, children who have been determined to be homeless, at risk of abuse, neglect or exploitation, and children with special needs.

**Service Area/Geographic Focus:** Hillsborough County

**Bilingual Services:** Yes – Spanish

**Funding Amount:** \$1,075,000

**Contact Information:**

**Address:** 6302 East Dr. Martin Luther King Jr. Boulevard  
Suite 100  
Tampa, FL 33619

**Phones:** (813) 515-2340

**Website:** [www.elchc.org](http://www.elchc.org)

**Social Media:** Facebook – ELC of Hillsborough  
X – @elchillsborough  
Instagram – @elchillsborough

**Subcontracts:** None

***Early Learning and Intervention Program*****Program Description**

The Early Learning and Intervention Program provides gap early intervention services for children birth to five years old experiencing delays in development but may not meet the eligibility criteria for Early Steps or Child Find. Easterseals offers caregiver/child intervention services, parent education, and service coordination. It is an in-home program with an option of some service occurring in the child's school setting.

**Target Population Served:** Partners with children birth to five who are not eligible for services through Early Steps or Child Find

**Service Area/Geographic Focus:** Hillsborough County

**Bilingual Services:** Yes – Spanish

**Funding Amount:** \$712,324

**Contact Information:**

**Address:** 2460 Bloomingdale Avenue  
Suite 170  
Valrico, FL 33596

**Phone:** (813) 807-9717

**Website:** [www.easterdeals.com/florida](http://www.easterdeals.com/florida)

**Social Media:** Facebook – Easterseals Florida  
X – @EasterSealsFL  
Instagram – @EasterSealsFL

**Subcontracts:** None

## *The Incredible Years*

### **Program Description**

The Incredible Years is an evidence-based program providing a 14-week program that focuses on building strong parent-child relationships, and preventing negative behavior through social-emotional learning, self-regulation, and problem-solving. Program sessions are held in the community. This program also provides in home support for individualized family focus.

**Target Population Served:** Parents/caregivers as well as children ages three to eight years of age with or without a disability

**Service Area/Geographic Focus:** Hillsborough County

**Bilingual Services:** Yes – Spanish

**Funding Amount:** \$879,585

### **Contact Information:**

**Address:** 2460 Bloomingdale Avenue  
Suite 170  
Valrico, FL 33596

**Phone:** (813) 807-9717

**Website:** [www.easterdeals.com/florida](http://www.easterdeals.com/florida)

**Social Media:** Facebook – Easterseals Florida  
X – @EasterSealsFL  
Instagram – @EasterSealsFL

**Subcontracts:** None

***Autism Is Real*****Program Description**

The Family Enrichment Center's Autism Is Real Program provides all-embracing support for families with a child aged 36 months through 4th grade who have been identified as needing neuro development assistance. Services are tailored in-home support to meet the unique needs of each child in their familiar environment, equipping parents/caregivers with the strategies and techniques to manage and positively influence the behavior of the child, offering comprehensive training sessions and workshops designed to empower parents/caregivers with the knowledge and tools needed to effectively support the child.

Individualized Care Plans address the specific services to be provided to each child, assisting each child in developing educational learning skills and coping mechanisms, providing support to help the child to navigate social interactions and emotional challenges and connecting families with community resources, including financial assistance, counseling, and support groups.

**Target Population Served:** Children 36 months through 4th grade

**Service Area/Geographic Focus:** Hillsborough County

**Bilingual Services:** Yes – Spanish

**Funding Amount:** \$1,279,402

**Contact Information:**

**Address:** 1002 East Dr. Martin Luther King Jr. Boulevard  
Tampa, FL 33603

**Phone:** (813) 237-0914

**Website:** [www.fectampa.org](http://www.fectampa.org)

**Social Media:** None

**Subcontracts:** None





***Kinship Care*****Program Description**

The Kinship Care program provides intensive case management for children residing with a relative caregiver or with another caring adult. Services include compassionate help, counseling, training, advocacy, support groups, respite care, legal support, health aide, educational support and access to community resources.

**Target Population Served:** Children birth through 8th grade

**Service Area/Geographic Focus:** Hillsborough County

**Bilingual Services:** No

**Funding Amount:** \$398,195

**Contact Information:**

**Address:** 1002 East Dr. Martin Luther King Jr. Boulevard  
Tampa, FL 33603

**Phone:** (813) 237-0914

**Website:** [www.fectampa.org](http://www.fectampa.org)

**Social Media:** None

**Subcontracts:** None

***Motivated Minds*****Program Description**

The Family Enrichment Center's Motivated Minds Program is a beacon of support for families with children grades 3rd through 8th facing a myriad of childhood challenges. This comprehensive initiative provides crucial assistance in areas such as truancy, school and home behavior, low self-esteem, bullying, anxiety, anger, trauma, character development, and grieving. Additional program services include community resources and linkage, family support, workshops and trainings to help parents/caregivers to better understand and meet the diverse needs of the child/ren in their care.

**Target Population Served:** Children 3rd through 8th grade

**Service Area/Geographic Focus:** Hillsborough County

**Bilingual Services:** No

**Funding Amount:** \$595,337

**Contact Information:**

**Address:** 1002 East Dr. Martin Luther King Jr. Boulevard  
Tampa, FL 33603

**Phone:** (813) 237-0914

**Website:** [www.fectampa.org](http://www.fectampa.org)

**Social Media:** None

**Subcontracts:** None

***Connecting Kids to Care*****Program Description**

Connecting Kids to Care (CKC) is a program designed to reduce the number of eligible but uninsured children through enrollment in healthcare coverage and connecting them to appropriate care. CKC assists families with completing application or coverage renewal support. The program provides education to families and professionals to promote access to quality healthcare.

**Target Population Served:** Families with children birth through middle school age

**Service Area/Geographic Focus:** Hillsborough County

**Bilingual Services:** Yes – Spanish

**Funding Amount:** \$521,533

**Contact Information:**

**Phone:** (813) 995-7005

**Website:** [www.FamilyHealthcareFdn.org](http://www.FamilyHealthcareFdn.org)

**Social Media:** Facebook – FamilyHealthcarefdn  
Instagram – @thefamilyhealthcarefoundation

**Subcontracts:** None

***CodeMasters (Countywide)*****Program Description**

FEF CodeMasters provides youth after-school hands-on opportunities to learn to code and create with technology; to develop skills needed to pursue and succeed in the jobs of the future; and to begin to explore exciting science, technology, engineering, art, and mathematics (STEAM) careers.

**Target Population Served:** Students 1st through 6th grade

**Service Area/Geographic Focus:** Hillsborough County Public School HOST Programs, City of Tampa Park & Recreational Centers

**Bilingual Services:** No

**Funding Amount:** \$164,787

**Contact Information:**

**Address:** 201 East Kennedy Boulevard  
Suite 1525  
Tampa, FL 33602

**Phone:** (813) 272-2772

**Website:** [www.fefonline.org/code](http://www.fefonline.org/code)

**Social Media:** Facebook – [fefcodemasters](#)  
Instagram – [@fefcodemasters](#)

**Subcontracts:** None

***CodeMasters (Strategic Initiative)*****Program Description**

FEF CodeMasters provides youth hands-on opportunities to learn to code and create with technology to develop skills needed to pursue and succeed in the jobs of the future, and to begin to explore exciting science, technology, engineering, art, and mathematics (STEAM) careers.

**Target Population Served:** Students 1st through 8th grade

**Service Area/Geographic Focus:** Hillsborough County Public School HOST Programs, City of Tampa Park & Recreational Centers in the following zip codes: 33603, 33610 & 33619

**Bilingual Services:** No

**Funding Amount:** \$194,198

**Contact Information:**

**Address:** 201 East Kennedy Boulevard  
Suite 1525  
Tampa, FL 33602

**Phone:** (813) 272-2772

**Website:** [www.fefonline.org/code](http://www.fefonline.org/code)

**Social Media:** Facebook – [fefcodemasters](#)  
Instagram – [@fefcodemasters](#)

**Subcontracts:** None

*Successful Start*

**Program Description**

Successful Start aims to address the educational needs of students by providing VPK to 3rd grade mathematics teachers in Hillsborough County Public Schools a high-quality professional development training.

**Target Population Served:** Elementary school (VPK – 3rd grade) mathematics teachers

**Service Area/Geographic Focus:** Hillsborough County Public Schools

**Bilingual Services:** No

**Funding Amount:** \$964,546

**Contact Information:**

**Address:** 4600C University Center  
Tallahassee, FL 32839

**Phone:** (850) 644-7619

**Website:** [www.successfulstarttampa.com](http://www.successfulstarttampa.com)

**Social Media:** None

**Subcontracts:** None

## *Girl Scout Troop Program*

### **Program Description**

The Girl Scout Troop Program is designed to equip girls in kindergarten to fifth grade reach her full potential. Girls will participate in the Girl Scout Leadership Experience (GSLE) which offers a strong sense of self, positive values, challenge seeking, healthy relationships, and community problem solving. The GSLE combines a variety of activities with supportive, mentoring relationships and the three Girl Scout processes (Girl-Led, Cooperative Learning, and Learning by Doing). The program is supported by a tradition-driven, emotionally safe space for girls.

**Target Population Served:** Girls from kindergarten to fifth grade

**Service Area/Geographic Focus:** Serving girls in the following zip codes: 33603, 33604, 33610, and 33619

**Bilingual Services:** No

**Funding Amount:** \$174,345

### **Contact Information:**

**Address:** 4610 Eisenhower Boulevard  
Tampa, FL 33634

**Phone:** (813) 281-4475

**Website:** [www.gswcf.org](http://www.gswcf.org)

**Social Media:** Facebook – GirlScoutsWCF  
X – @gswcf  
Instagram – @gswcf

**Subcontracts:** None

***Children's Board Free Tuesday*****Program Description**

Children's Board Free Tuesday provides free admission into Glazer Children's Museum for children and their parents or caregivers on the first Tuesday of each month. Monthly free admission will be offered from 9:30am to 5pm. (Hours subject to change in summer months).

**Target Population Served:** Families with children birth to ten years of age

**Service Area/Geographic Focus:** Hillsborough County

**Bilingual Services:** Yes – Spanish

**Funding Amount:** \$76,013

**Contact Information:**

**Address:** 110 West Gasparilla Plaza  
Tampa, FL 33602

**Phone:** (813) 443-3861

**Website:** [www.glazermuseum.org](http://www.glazermuseum.org)

**Social Media:** Facebook – Glazer Children's Museum  
X – @Glazermuseum  
Instagram – @glazerchildrensmuseum

**Subcontracts:** None



***Learn & Play Tampa Bay*****Program Description**

The Learn & Play Tampa Bay program provides quality early learning experiences at the seven Children's Board Family Resource Centers. The program delivers weekly in-person developmental classes and provides take home activities that promote early learning and school readiness.

**Target Population Served:** Children birth to age five and their parents or caregivers

**Service Area/Geographic Focus:** Hillsborough County

**Bilingual Services:** No

**Funding Amount:** \$355,056

**Contact Information:**

**Address:** 110 West Gasparilla Plaza  
Tampa, FL 33602

**Phone:** (833) 426-7529

**Website:** [www.glazermuseum.org](http://www.glazermuseum.org)

**Social Media:** Facebook – LearnPlayTampaBay  
X – @Glazermuseum  
Instagram – @glazerchildrensmuseum

**Subcontracts:** None



## **GULF COAST JEWISH FAMILY AND COMMUNITY SERVICES**

### ***Good Afternoon Friends and Amigos***

#### **Program Description**

Good Afternoon Friends and Amigos is an after school program that provides tutoring and homework assistance. Parents or caregivers of the students will be involved in their education, development, and family activities. Home visitation resources are available to parents and caregivers to help meet the child's identified needs.

**Target Population Served:** Kindergarten through 5th grade students enrolled at Reddick and Robinson Elementary schools

**Service Area/Geographic Focus:** Wimauma and Plant City

**Bilingual Services:** Yes – Spanish

**Funding Amount:** \$466,943

#### **Contact Information:**

**Address:** 14041 Icot Boulevard  
Clearwater, FL 33760

**Phone:** (727) 479-1800, ext. 3101

**Website:** [www.gcjfcs.org](http://www.gcjfcs.org)

**Social Media:** Facebook – Gulf Coast JFCS  
Instagram – @GulfCoastJFCS

**Subcontracts:** None





## GULF COAST JEWISH FAMILY AND COMMUNITY SERVICES

### *Padres De Crianza*

#### **Program Description**

Padres De Crianza provides support services and social opportunities. The program is a Kinship Model, providing support services and social opportunities to non-dependency Hispanic/Latino caregivers and children birth through middle school age. The program will support children and families by providing case management, home visits, support groups, linkage to community supports, and telephone crisis intervention.

**Target Population Served:** Hispanic/Latino-identifying relative or non-relative caregivers with children birth to middle school age in their care who are not involved in state dependency care.

**Service Area/Geographic Focus:** Hillsborough County

**Bilingual Services:** Yes – Spanish and English

**Funding Amount:** \$356,347

#### **Contact Information:**

**Address:** 3550 West Waters Avenue  
Tampa, FL 33614

**Phone:** (813) 352-5766

**Website:** [www.gcjfccs.org](http://www.gcjfccs.org)

**Social Media:** Facebook – Gulf Coast JFCS  
Instagram – @GulfCoastJFCS

**Subcontracts:** None





## GULF COAST JEWISH FAMILY AND COMMUNITY SERVICES

### *Teen Parent Engagement Program*

#### **Program Description**

The Teen Parent Engagement Program is a leadership program for teen moms and dads. Our primary strategies are a diverse mix of workshops, home visitation, education, screening, mentoring, and case management. On-going engagement activities include training comprised of a two-day group retreat, monthly group workshops, varied mentorship experiences, and in-home visits. In-home visits include case management, developmental screenings, and parenting education.

**Target Population Served:** Pregnant Teens and Parents ages fourteen to nineteen years of age

**Service Area/Geographic Focus:** Hillsborough County

**Bilingual Services:** Yes – Spanish and Creole

**Funding Amount:** \$302,107

#### **Contact Information:**

**Address:** 3550 West Waters Avenue  
Suite 250  
Tampa, FL 33614

**Phone:** (813) 930-7103

**Website:** [www.gcjfcs.org](http://www.gcjfcs.org)

**Social Media:** Facebook – Gulf Coast JFCS  
Instagram – @GulfCoastJFCS

**Subcontracts:** None





# HEALTHY START COALITION OF HILLSBOROUGH COUNTY

## *Healthy Families Hillsborough*

### **Program Description**

Healthy Families Hillsborough is a nationally accredited home visitation program that supports parents by offering wrap-around services during and after pregnancy. The program offers personal and emotional support, parenting education, child developmental screenings, and helps to set goals that are individual to participating families with children up to age five. Services are voluntary and flexible to work with busy schedules.

**Target Population Served:** Parents expecting a baby or have a baby less than two months of age

**Service Area/Geographic Focus:** Hillsborough County

**Bilingual Services:** Yes – Spanish

**Funding Amount:** \$2,409,132

### **Contact Information:**

**Address:** 2806 North Armenia Avenue  
Suite 100  
Tampa, FL 33607

**Phone:** (813) 233-2800

**Website:** [www.healthystartcoalition.org](http://www.healthystartcoalition.org)

**Social Media:** Facebook – HSCHillsborough  
X – @HSCHillsborough  
Instagram – @HealthyStartHillsborough

**Subcontracts:** Champions for Children  
Children's Home Network





# HEALTHY START COALITION OF HILLSBOROUGH COUNTY

## *HealthySteps Hillsborough*

### **Program Description**

HealthySteps Hillsborough supports families and their children age birth to three years by providing parenting education, information, referrals, and care coordination. Based in pediatric offices, HealthySteps Hillsborough connects with families during and between well-child visits to assist families with parenting concerns and challenges and meet families' specific needs to support strong parent/child attachment and healthy child development.

**Target Population Served:** Families with children age birth to three years who are pediatric care patients of USF Health Riverview Pediatrics and USF Pediatric NICU. Follow up clinics at USF Campus and 17 Davis Medical Building, 17 Davis General Pediatrics, and USF HealthPark Pediatrics.

**Service Area/Geographic Focus:** Hillsborough County

**Bilingual Services:** Yes – Spanish

**Funding Amount:** \$1,672,373

### **Contact Information:**

**Address:** 2806 North Armenia Avenue  
Suite 100  
Tampa, FL 33607

**Phone:** (813) 539-0884

**Website:** [www.healthystartcoalition.org](http://www.healthystartcoalition.org)

**Social Media:** Facebook – HSCHillsborough  
X – @HSCHillsborough  
Instagram – @HealthyStartHillsborough

**Subcontracts:** None





# HEALTHY START COALITION OF HILLSBOROUGH COUNTY

## *Safe Baby Plus*

### **Program Description**

Safe Baby Plus is an educational program delivered to parents prior to hospital discharge with a newborn addressing the three leading causes of preventable infant death including: choosing safe caregiver, preventing shaken baby syndrome, and practicing safe sleep. The program provides a developmental screening program for infants during their first year of life. The program also provides increased access and linkages to resources and safety education for pregnant women and women with children who are receiving the Special Supplemental Nutrition Program at Hillsborough County WIC sites. Safe Baby training and educational materials are also offered by certified Safe Baby instructors to early childhood professionals.

**Target Population Served:** Families with infants and professionals such as nurses, physicians, social workers or child welfare staff

**Service Area/Geographic Focus:** Hillsborough County

**Bilingual Services:** Yes – Spanish

**Funding Amount:** \$1,748,571

### **Contact Information:**

**Address:** 2806 North Armenia Avenue  
Suite 100  
Tampa, FL 33607

**Phone:** (813) 849-7985

**Website:** [www.healthysafebaby.org](http://www.healthysafebaby.org)

**Social Media:** Facebook – HSHillsborough  
X – @HSHillsborough  
Instagram – @HealthyStartHillsborough

**Subcontracts:** St. Joseph's Hospital



***Water Warriors*****Program Description**

The Water Warriors program provides swim lessons and water safety education for beginner swimmers. Each lesson is 45 minutes and teaches skills such as floating, breath control, submerging, and water safety education. Participants and their parents/caregivers will also learn about water safety topics such as beach safety, home pool safety, and CPR.

**Target Population Served:** Ages three to eighteen

**Service Area/Geographic Focus:** Hillsborough County – Facility located in Brandon, Florida

**Bilingual Services:** No

**Funding Amount:** \$75,977

**Contact Information:**

**Address:** 405 Beverly Boulevard  
Brandon, FL 33511

**Phone:** (813) 689-0908

**Website:** [www.High5inc.org](http://www.High5inc.org)

**Social Media:** None

**Subcontracts:** None



## *Quality Early Education System*

### **Program Description**

The Quality Early Education System supports children and families by providing training, coaching, professional development, resources and targeted specialized early childhood program intervention to enhance the quality of operations and learning environment.

The Conscious Awareness Learning Model (CALM) provides trainings and on-site instruction to teachers and families in social-emotional learning using the Conscious Discipline® approach to implement model activities in the classroom.

Literacy coaches work to develop pre-reading skills through small group activities with teachers in preschool settings. In addition, parents or caregivers receive books and literacy activities to use at home.

**Target Population Served:** Early Childhood Education providers and families with children birth to age five

**Service Area/Geographic Focus:** Hillsborough County

**Bilingual Services:** Yes – Spanish

**Funding Amount:** \$2,706,665

### **Contact Information:**

**Address:** 1602 North 15th Street  
Suite 248  
Tampa, FL 33605

**Phone:** (813) 259-6415

**Website:** [www.calmhcc.org](http://www.calmhcc.org)  
[www.earlyliteracymatters.com](http://www.earlyliteracymatters.com)

**Social Media:** X – @HCC\_QEES  
Instagram – @HCCQEES

**Subcontracts:** None



## *Tech Connect*

### **Program Description**

Tech Connect program equips students that are technologically challenged with the tools and knowledge required for digital access. Project staff work in collaboration with Hillsborough County Public Schools to help identify and plan for students.

**Target Population Served:** Families with elementary age school students enrolled in public schools (not virtual school)

**Service Area/Geographic Focus:** Hillsborough County

**Bilingual Services:** Yes – Spanish

**Funding Amount:** \$573,310

### **Contact Information:**

**Address:** 2306 North Howard Avenue  
Tampa, FL 33607-2613

**Phone:** (813) 574-0283

**Website:** [www.educationfoundation.com](http://www.educationfoundation.com)

**Social Media:** Facebook – Hillsborough Education Foundation  
X – @Hillsedufnd  
Instagram – @Hillsedufnd

**Subcontracts:** None



## *La Red de Padres Activos/Network of Active Parents*

### **Program Description**

La Red de Padres Activos is a parent engagement and family strengthening program that seeks to engage Latino parents in the education of their children and support the parent's own personal growth and development by hosting weekly workshops to educate parents about resources, parenting skills, child development stages, and navigation of the school system so that they may better understand their role and be more involved in their child's success in school. While the parents participate in social networking and educational workshops, La Red engages their children in literacy and learning activities.

**Target Population Served:** Latino parents with children three years of age through 8th grade

**Service Area/Geographic Focus:** Plant City, North Tampa, West Tampa, Drew Park, Brandon and Ruskin/Wimauma

**Bilingual Services:** Yes – Spanish

**Funding Amount:** \$1,955,709

### **Contact Information:**

**Address:** 7825 North Dale Mabry Hwy  
Suite 102  
Tampa, FL 33614

**Phone:** (813) 936-7700

**Website:** [www.Hispanicservicescouncil.org](http://www.Hispanicservicescouncil.org)

**Social Media:** Facebook – Hispanic Services Council  
X – HispanicSVC

**Subcontracts:** None

## *Building Family Financial Skills*

### **Program Description**

Building Family Financial Skills provides financial wellness training for parents/caregivers. The program uses “Your Money, Your Goals” curriculum through interactive sessions that uses tools to build everyone’s own financial wellness plan and connect families to local financial related sources. A guest speaker from a financial institution is present for one session in each series to present material and to use as a resource.

**Target Population Served:** Families with children,. birth to middle school

**Service Area/Geographic Focus:** Hillsborough County

**Bilingual Services:** No

**Funding Amount:** \$99,999

### **Contact Information:**

**Address:** 5301 West Cypress Street  
Tampa, FL 33607

**Phone:** (813) 341-9199

**Website:** [www.tampaha.org](http://www.tampaha.org)

**Social Media:** Facebook – Tampa Housing Authority  
X – @Tampahaorg  
Instagram – @Tampahaorg

**Subcontracts:** None

## *Building Hope*

### **Program Description**

The Building Hope program provides care coordination and case Management, ASQ-3 development screenings and follow-up sessions with parents for preschool-age children, and year-round afterschool and summer programming. Taking a needs-based approach, the program helps families build resiliency, an atmosphere of accessibility with specific areas of focus including: supportive relationships; stable/safe living and equitable environments; constructive social engagement and a sense of connectedness; and learning social and emotional competencies. Building Hope is built on the Community Health Worker model, collaborating with residents from the target communities as staff and/or volunteers to use their unique experiences to assist in the program design and ongoing implementation.

**Target Population Served:** Families with children, birth through middle school

**Service Area/Geographic Focus:** THA properties and their surrounding zip codes: Encore (zip code 33602), Belmont Heights Estates (zip code 33605), and West River (zip code 33607)

**Bilingual Services:** Yes – Spanish

**Funding Amount:** \$1,215,970

### **Contact Information:**

**Address:** 5301 West Cypress Street  
Tampa, FL 33607

**Phone:** (813) 341-9101, ext. 2071

**Website:** [www.tampaha.org](http://www.tampaha.org)

**Social Media:** Instagram – @tampahaorg

**Subcontracts:** None



## *Village Link Up*

### **Program Description**

Village Link Up provides case management, parent education, and supportive services with the goal of increasing parent engagement in child education and overall family well-being. The coordination of services to families supports the educational goals and academic success of children. The program assists in the development of a support plan with families, hosts educational workshops and offers referrals to community resources.

**Target Population Served:** Parents/caregivers with children birth to elementary school

**Service Area/Geographic Focus:** Robles Park Village, C. Blythe Andrews, Seminole Park, Belmont Heights, Moses White Estates, Gardens at South Bay, and Arbors at Padgett Estates in Hillsborough County

**Bilingual Services:** Yes – Spanish

**Funding Amount:** \$439,987

### **Contact Information:**

**Address:** 5301 West Cypress Street  
Tampa, FL 33607

**Phone:** (813) 341-9101 ext. 2140

**Website:** [www.tampaha.org](http://www.tampaha.org)

**Social Media:** Facebook – Tampa Housing Authority  
X – @Tampahaorg  
Instagram – @Tampahaorg

**Subcontracts:** None



## *Youth Success*

### **Program Description**

Youth Success provides year-round educational enrichment opportunities and financial literacy. The program services include reading and writing activities, access to “MyOn” for online reading activities, financial literacy education, STEAM, and experiential exposure with field trips.

**Target Population Served:** Children kindergarten through 5th grade

**Service Area/Geographic Focus:** Hillsborough County

**Bilingual Services:** No

**Funding Amount:** \$354,621

### **Contact Information:**

**Address:** 5301 West Cypress Street  
Tampa, FL 33607

**Phone:** (813) 341-9101 ext. 2200

**Website:** [www.tampaha.org](http://www.tampaha.org)

**Social Media:** Facebook – Tampa Housing Authority  
X – @tampahaorg  
Instagram – @Tampahaorg

**Subcontracts:** None



***Music Outreach Program*****Program Description**

The Music Outreach Program teaches children about the Ukulele, a musical instrument. They acquire knowledge of music definitions, practice hands-on chords, learn to play songs and earn their instruments. The program also offers instructions on musical topics and musical knowledge.

**Target Population Served:** Children Kindergarten through 8th grade

**Service Area/Geographic Focus:** Hillsborough County Public Schools HOST Program, City of Tampa Park & Recreational Centers in the following zip codes: 33603, 33610, and 33619

**Bilingual Services:** No

**Funding Amount:** \$102,059

**Contact Information:**

**Address:** 1217 Lake Magdalene Hill Drive  
Tampa, FL 33613

**Phone:** (813) 613-0239

**Website:** [www.instruments4life.com](http://www.instruments4life.com)

**Social Media:** Facebook – [instruments4life](https://www.facebook.com/instruments4life)  
Instagram – [@instruments4life](https://www.instagram.com/instruments4life)

**Subcontracts:** None



## *Achievers*

### **Program Description**

Joshua Way of Hope Achievers program works with students enrolled in 3rd through 8th grade and their parents to offer academic support services along with social and behavioral training. The focus of this program is to enhance academic success and on-time grade promotion for each student. We teach students individual learning strategies to improve their reading, comprehension, vocabulary, math skills, organization and study skills, and provide social skills and behavior skills training to students. We offer support training to parents to include Managing Anger, How to Deal with Stress, Fostering Healthy Communication, Enhancing your Child's Self-Esteem, and so many more. Families also receive case management and resources to reduce any barriers to their students' academic success.

**Target Population Served:** Families with students in 3rd through 8th grade

**Service Area/Geographic Focus:** Hillsborough County

**Bilingual Services:** Yes – Spanish

**Funding Amount:** \$1,260,000

### **Contact Information:**

**Address:** 5701 East Hillsborough Avenue  
Suite 2453  
Tampa, FL 3361

**Phone:** (813) 373-5008

**Website:** [www.joshuawayofhope.org](http://www.joshuawayofhope.org)

**Email:** [info@joshuawayofhope.org](mailto:info@joshuawayofhope.org)

**Social Media:** Facebook – Joshua Way Hope  
Instagram – @JoshuaWayofHope

**Subcontracts:** None



***Building a Stronger Me*****Program Description**

The Building a Stronger Me program provides character development training classes and activities based on the Botvin Life Skills evidence based program. Children will participate in five-character development training classes discussing the four learning styles with topic/activities including role-playing scenarios, literacy through game play, toolbox techniques with topics, and identifying triggers. The program provides referrals to parent/caregivers for services needed based on observations and communication.

**Target Population Served:** Children 3rd through 8th grade

**Service Area/Geographic Focus:** Hillsborough County Public Schools HOST Program, City of Tampa Park & Recreational Centers in the following zip codes: 33603, 33610, and 33619

**Bilingual Services:** No

**Funding Amount:** \$109,642

**Contact Information:**

**Address:** 5701 East Hillsborough Avenue  
Suite 2453  
Tampa, FL 33610

**Phone:** (813) 546-1896

**Website:** [www.Joshuawayofhope.org](http://www.Joshuawayofhope.org)

**Social Media:** Facebook – Joshua Way Hope  
Instagram – @JoshuaWayofHope

**Subcontracts:** None

***Life Skills 360 Training Institute*****Program Description**

The Life Skills 360 Training Institute provides a robust training program that teaches students an array of skills, techniques, and tools to utilize in their journey of life. The basic foundation of the Life Skills program is built upon highly regarded evidence-based prevention curriculum. Alongside this, we incorporate interactive exercises and group discussions to ensure an engaging learning experience. Students learn how to manage anger, social skills, self-esteem, decision making, how we deal with stress and effective communication.

**Target Population Served:** Children 3rd through 8th grade

**Service Area/Geographic Focus:** City of Tampa and Plant City

**Bilingual Services:** No

**Funding Amount:** \$152,158

**Contact Information:**

**Address:** 5701 East Hillsborough Avenue  
Suite 2453  
Tampa, FL 336101

**Phone:** (813) 546-1896

**Website:** [www.Joshuawayofhope.org](http://www.Joshuawayofhope.org)

**Social Media:** Facebook – Joshua Way Hope  
Instagram – @JoshuaWayofHope

**Subcontracts:** None

***Woven Empowerment – WE Program*****Program Description**

The WE Program collaborates with families to provide children from birth to age eight person-centered and strengths-based case management, mentoring, educational workshops, and tangible assistance for basic needs. In the WE Program, children can participate in The Zone, an after-school program.

**Target Population Served:** Families with children up to age eight who have been impacted by homelessness or are at risk of homelessness

**Service Area/Geographic Focus:** Target zip codes of 33602, 33603, 33604, 33605, 33606, 33607, 33609, 33610, 33612, 33614, and 33617

**Bilingual Services:** No

**Funding Amount:** \$253,596

**Contact Information:**

**Address:** 3309 North 15th Street  
Tampa, FL 33605

**Phone:** (813) 803-0220

**Website:** [www.justinitiative.com](http://www.justinitiative.com)

**Social Media:** Facebook – justinitiative  
X – @justinitiative  
Instagram – @justinitiative

**Subcontracts:** None



***C.R.E.A.T.E. School Age Program*****Program Description**

The Children's Recreation, Education, Arts and Therapeutic Experience (C.R.E.A.T.E.) is an afterschool program providing children with a nurturing therapeutic environment designed to alleviate the impacts of trauma and homelessness. It offers cooperative play, Science, Technology, Engineering, Art and Math (STEAM) activities and engages parents or caregivers in family events.

**Target Population Served:** Elementary age children experiencing or who have experienced homelessness or housing instability

**Service Area/Geographic Focus:** Elementary age children who reside at Miracle Place or attend Sullivan or Mango Elementary

**Bilingual Services:** Yes – Spanish

**Funding Amount:** \$556,227

**Contact Information:**

**Address:** 2002 North Florida Avenue  
Tampa, FL 33602

**Phone:** (813) 209-1000

**Website:** [www.metromin.org](http://www.metromin.org)

**Social Media:** Facebook – Metropolitan Ministries  
X – @metroministries  
Instagram – @metro\_min

**Subcontracts:** None



***First Hug*****Program Description**

First Hug is an intensive case management program that uses a trauma informed care approach to stabilize homeless families and address barriers to self-sufficiency. Services include connecting families to community resources, early intervention or education, child care, employment, housing search/placement, and home safety.

**Target Population Served:** Homeless families with children birth through middle school

**Service Area/Geographic Focus:** Hillsborough County

**Bilingual Services:** Yes – Spanish

**Funding Amount:** \$1,448,939

**Contact Information:**

**Address:** 2002 North Florida Avenue  
Tampa, FL 33602

**Phone:** (813) 209-1000

**Website:** [www.metromin.org](http://www.metromin.org)

**Social Media:** Facebook – Metropolitan Ministries  
X – @metroministries  
Instagram – @metro\_min

**Subcontracts:** None



***Pathways to Hope*****Program Description**

Pathways to Hope is a homeless prevention program that provides support to families who are experiencing economic instability and/or housing insecurity. The program is designed to provide support to families based on their personal, social, and community networks' strengths and is specially tailored to each family based on their current situation and needs. The goal is to assist families with attaining housing stability.

Services include access to case management support, educational workshops, goal planning, and community resources.

**Target Population Served:** Families with children in Elementary and Middle School

**Service Area/Geographic Focus:** Families with children at the following Hillsborough County Public Schools: Lewis, Robinson, Forest Hills, Oak Park, Greco, Jennings, Mango, Pinecrest, Dover, and Turkey Creek.

**Bilingual Services:** Yes – Spanish

**Funding Amount:** \$1,087,192

**Contact Information:**

**Address:** 2002 North Florida Avenue  
Tampa, FL 33602

**Phone:** (813) 209-1006

**Website:** [www.metromin.org](http://www.metromin.org)

**Social Media:** Facebook – Metropolitan Ministries  
X – @metroministries  
Instagram – @metro\_min

**Subcontracts:** Hispanic Services Council



***MOSI in Motion at the Children's Board Family Resource Center  
in Plant City***

**Program Description**

MOSI in Motion will provide Science, Technology, Engineering, and Math (STEM) learning opportunities and family engagement at the Children's Board Family Resource Center in Plant City. The program will support children and families by offering access to an interactive and educational exhibit known as "Be the Astronaut" that includes missions to space and a reading nook. In addition, the program will offer STEM workshops and family rights that provide collaborative and hands on family activities.

**Target Population Served:** Children from birth to 11 years old and their families

**Service Area/Geographic Focus:** East Hillsborough County

**Bilingual Services:** Some Spanish materials, as requested

**Funding Amount:** \$125,000

**Contact Information:**

**Address:** 4801 East Fowler Avenue  
Tampa, FL 33617

**Phone:** (813) 987-6000

**Website:** [www.mosi.org](http://www.mosi.org)

**Social Media:** Facebook – MOSI  
X – @mositampa  
Instagram – @mosi\_tampa  
LinkedIn – MOSI Tampa

**Subcontracts:** None



***One More Child Family Support*****Program Description**

The Family Support Program at One More Child provides help to families that are experiencing tough times and need a little extra support. Using evidence-based practices our team provides training and assistance that will improve parenting skills, develop household management strategies, and increase wraparound support to strengthen families. This program uses an individualized approach that will help parents better connect with their children, reduce stress, and increase meaningful connections to community supports. Services are provided in a combination of settings, both in home and in the community.

**Target Population Served:** Parents/Caregivers with children from birth through age eight

**Service Area/Geographic Focus:** 33604, 33610, 33614, 33568, and 33511

**Bilingual Services:** No

**Funding Amount:** \$151,200

**Contact Information:**

**Address:** 1015 Sikes Boulevard  
Lakeland, FL 33815

**Phone:** (813) 252-9762

**Website:** [www.onemorechild.org](http://www.onemorechild.org)

**Social Media:** Facebook – OneMoreChild  
X – @One\_MoreChild  
Instagram – @OneMoreChild

**Subcontracts:** None

# PARENTS AND CHILDREN ADVANCE TOGETHER (PCAT) LITERACY MINISTRIES

## *South County Literacy Initiative*

### **Program Description**

The South County Literacy Initiative is an after school program designed to assist low performing students by increasing their reading and comprehension skills with one-on-one or group instruction. An individualized instruction plan is developed with teachers. Parents are engaged by bilingual personnel, as needed, to involve them in their child's educational success.

**Target Population Served:** Kindergarten, 1st and 2nd grade students

**Service Area/Geographic Focus:** Ruskin Elementary School

**Bilingual Services:** Yes – Spanish

**Funding Amount:** \$569,105

### **Contact Information:**

**Address:** 5004 East Fowler Avenue  
Suite C-345  
Tampa, FL 33617

**Phone:** (813) 467-6826

**Website:** [www.pcatliteracyministries.org](http://www.pcatliteracyministries.org)

**Social Media:** None

**Subcontracts:** None



# PARENTS AND CHILDREN ADVANCE TOGETHER (PCAT) LITERACY MINISTRIES

## *Sulphur Springs Literacy Initiative*

### **Program Description**

The PCAT Literacy program provides after school tutoring to kindergarten students who are reading below level. Students are referred to our program by their classroom teacher and are eligible to receive tutoring two days a week in a small group or one-on-one setting.

**Target Population Served:** Kindergarten students

**Service Area/Geographic Focus:** Sulphur Springs K-8 Community School

**Bilingual Services:** Yes – Spanish, French and Haitian Creole

**Funding Amount:** \$177,756

### **Contact Information:**

**Address:** 5004 East Fowler Avenue  
Suite C-345  
Tampa, FL 33617

**Phone:** (813) 467-6826

**Website:** [www.pcatliteracyministries.org](http://www.pcatliteracyministries.org)

**Social Media:** None

**Subcontracts:** None



***Learning Connections***

**Program Description**

Learning Connections is an evidence-based program for special tutoring mediation based on the Feuerstein Instrumental Enrichment method. The program teaches struggling students how to analyze issues and build cognitive strategies while also enhancing their self-esteem.

**Target Population Served:** Students in 3rd through 8th grade

**Service Area/Geographic Focus:** Specific zip codes of 33604, 33605, 33610, 33612, 33617, 33510, and 33511

**Bilingual Services:** No

**Funding Amount:** \$96,958

**Contact Information:**

**Address:** 7402 North 56th Street  
Suite 300 B  
Tampa, FL 33617-7733

**Phone:** (813) 220-7468

**Website:** [www.positivedevelopment.net](http://www.positivedevelopment.net)

**Social Media:** Facebook – Positive Family Partners  
LinkedIn – Positive Family Partners Inc.

**Subcontracts:** None

***Empowering a Community with Hope (E.A.C.H. One)*****Program Description**

The E.A.C.H. One Initiative provides in-home support and case management services for families. The services support overall well-being through family team conferencing and developing support plans to address identified needs. Developmental screenings are offered to young children and support groups are available to youth.

**Target Population Served:** Families with children birth through 8th grade

**Service Area/Geographic Focus:** Zip codes 33604, 33605, 33607, 33610, 33612, 33613, 33617 and 33619

**Bilingual Services:** Yes – Spanish

**Funding Amount:** \$1,150,000

**Contact Information:**

**Address:** 5118 North 56th Street  
Suite 224  
Tampa, FL 33610

**Phone:** (813) 977-7677

**Website:** [www.positivespinfl.org](http://www.positivespinfl.org)

**Social Media:** Facebook – Positive Spin Inc

**Subcontracts:** None



***Children's Vision Health and Safety Services*****Program Description**

The Children's Vision Health and Safety Services program provides vision screenings, eye safety, education at the Children's Board Family Resource Centers, childcare centers, and other community locations. It may provide eyewear for children with an identified vision condition and their parents/caregivers. The program supports children and families by providing early identification of vision health conditions, to vision care exercises, and referral for medical follow up and ongoing support to promote vision health.

**Target Population Served:** Children birth to fourteen and their parents/caregivers

**Service Area/Geographic Focus:** Hillsborough County

**Bilingual Services:** Yes – Spanish

**Funding Amount:** \$706,223

**Contact Information:**

**Address:** 9200 Seminole Boulevard  
Seminole, FL 33772

**Phone:** (813) 874-2020

**Website:** [www.pvfla.org](http://www.pvfla.org)

**Social Media:** Facebook – Preserve Vision Florida  
X – @preservevision  
Instagram – @preservevisionflorida

**Subcontracts:** None



***Giving Resources and Opportunities with Trust and Hope  
(GROWTH) with Doulas and Dads***

**Program Description**

The GROWTH with Doulas and Dads program provides pregnant women with Doula support services that promote healthy births and mother/child bonding. Parents or caregivers can receive prenatal support services, health education, mentoring, hospital labor and delivery assistance, breastfeeding, and nutritional guidance. In addition, the 24/7 Dad program increases “pro-fathering” knowledge, skills, and attitudes through structured weekly education sessions.

**Target Population Served:** Pregnant women and/or caregivers of children birth to eight weeks of age and fathers/caregivers of children birth to age fourteen

**Service Area/Geographic Focus:** Hillsborough County

**Bilingual Services:** Yes – Spanish

**Funding Amount:** \$951,479

**Contact Information:**

**Address:** 2902 North Armenia Avenue  
Suite 100  
Tampa, FL 33607

**Phone:** (813) 712-6300

**Website:** [www.reachupincorporated.org](http://www.reachupincorporated.org)

**Social Media:** Facebook – Reachup Inc.  
X – @reachup\_inc  
Instagram – @reachup\_in

**Subcontracts:** Champions for Children



***Global Explorers Program*****Program Description**

The Global Explorers Program provides services to promote character development through language exposure classes afterschool and summertime. The program will support children and families by exposing participants to new cultures, communications skills in a foreign language, and prepare participants to be global citizens. The program will teach the participants how to speak Spanish, Arabic, and Mandarin.

**Target Population Served:** Children kindergarten through 5th grade

**Service Area/Geographic Focus:** Hillsborough County Public Schools HOST Program, City of Tampa Park & Recreational Centers in the following zip codes: 33603, 33610, and 33619

**Bilingual Services:** Yes – Spanish

**Funding Amount:** \$151,200

**Contact Information:**

**Address:** 8056 North 56th Street  
Tampa, FL 33617

**Phone:** (813) 530-2313

**Website:** [www.redefinerswl.org](http://www.redefinerswl.org)

**Social Media:** Facebook – Redefiners World Languages  
X – @redefinerswl  
Instagram – @redefinerswl

**Subcontracts:** None





***Multilingual Citizens Program (MCP)*****Program Description**

The Multilingual Citizens Program (MCP) provides an evidenced-informed education program aimed at skill development critical to today's workforce, providing outcome-measured courses in English and Spanish for parents/caregivers and their children through distinct courses at the MCP office and Children's Board Family Resource Centers in North Tampa, Temple Terrace, Central Tampa, Town 'N Country, South County, Brandon, and Plant City, or in select Boys and Girls Clubs.

**Target Population Served:** Parents/Caregivers and children ages five to twelve

**Service Area/Geographic Focus:** Hillsborough County

**Bilingual Services:** Yes – Spanish

**Funding Amount:** \$1,235,925

**Contact Information:**

**Address:** 8056 North 56th Street  
Tampa, FL 33617

**Phone:** (813) 530-2313

**Website:** [www.redefinerswl.org](http://www.redefinerswl.org)

**Social Media:** Facebook – Redefiners World Languages  
X – @redefinerswl  
Instagram – @redefinerswl

**Subcontracts:** None



***myON Reader*****Program Description**

The Read on myON Project provides access to a digital library to all children from birth through 8th grade in Hillsborough County. The program offers literacy tools and a large collection of enhanced digital books with content in English, French, and Spanish to encourage reading.

**Target Population Served:** Children birth through 8th grade

**Service Area/Geographic Focus:** Hillsborough County

**Bilingual Services:** Yes – Spanish and French

**Funding Amount:** \$100,000

**Contact Information:**

**Address:** 2911 Peach Street  
Wisconsin Rapids, WI 54494

**Email:** [streetteam@myon.com](mailto:streetteam@myon.com)

**Website:** [www.readonmyon.com](http://www.readonmyon.com)

**Social Media:** Facebook – Readonmyon  
X – @myonreader

**Subcontracts:** None



## *Coaching Dreams Into Success*

### **Program Description**

The Coaching Dreams Into Success (CDIS) program provides empowers families to prioritize well-being through interactive workshops, life skill sessions and artistic expression events that inspire curiosity and a love for learning. The program's mission is to enhance self-esteem, foster self-sufficiency and strengthen family bonds, promoting personal growth and lasting connections.

**Target Population Served:** Families with children ages six to fourteen

**Service Area/Geographic Focus:** Hillsborough County

**Bilingual Services:** Yes – Spanish

**Funding Amount:** \$338,558

### **Contact Information:**

**Address:** 9309 North Florida Avenue  
Suite 101  
Tampa, FL 33612

**Phone:** (813) 559-9545

**Website:** [www.therectampa.org](http://www.therectampa.org)

**Social Media:** Facebook – The Resource Empowerment Centre

**Subcontracts:** None



***Villages CAFÉ*****Program Description**

Villages Children and Families Engaging (CAFÉ) program provides in person positive social behavior, parental engagement, and resource navigation support to parents and children. The program offers workshops, mentoring, family success planning, and sharing community resources.

**Target Population Served:** Families with children ages nine through middle school

**Service Area/Geographic Focus:** Hillsborough County

**Bilingual Services:** No

**Funding Amount:** \$465,811

**Contact Information:**

**Address:** 9309 North Florida Avenue  
Suite 101  
Tampa, FL 33612

**Website:** [www.therectampa.org](http://www.therectampa.org)

**Social Media:** None

**Subcontracts:** None



***Popup Adventure Playground Project*****Program Description**

Rooted in Play's mission is to ensure that all children have regular access to self-directed play opportunities. We accomplish this by hosting free, monthly popup adventures at City of Tampa playgrounds, share information and resources on the importance of play with parents and caregivers, and conduct play workshops for early childhood professionals.

**Target Population Served:** Children, families, and professionals

**Service Area/Geographic Focus:** Target zip codes: 33602, 33604, 33607, 33614, and 33611

**Bilingual Services:** No

**Funding Amount:** \$55,595

**Contact Information:**

**Address:** 7611 South Sparkman Street  
Tampa, FL 33616

**Phone:** (813) 494-2637

**Website:** [www.rootedinplay.org](http://www.rootedinplay.org)

**Social Media:** Facebook – Rooted in Play  
Instagram – @rootedinplayorg

**Subcontracts:** None



***Foster Grandparent Program with Readers in Motion*****Program Description**

Foster Grandparent Program with Readers in Motion provides intergenerational tutoring and mentoring by “grandparent” role models in Kindergarten, 1st and 2nd grade classrooms. The program also offers special activities including at home learning materials, reading challenges and Science, Technology, Engineering and Math (STEM) events for the whole family.

**Target Population Served:** Kindergarten, 1st and 2nd grade students

**Service Area/Geographic Focus:** B. T. Washington and Mendenhall Elementary Schools

**Bilingual Services:** Yes – Spanish

**Funding Amount:** \$338,676

**Contact Information:**

**Address:** 1306 West Sligh Avenue  
Tampa, FL 33604

**Phone:** (813) 932-5228

**Website:** [www.seniorsinservice.org](http://www.seniorsinservice.org)

**Social Media:** Facebook – Seniors in Service of Tampa Bay Inc.

**Subcontracts:** None



## *Middle School Youth Opportunity*

### **Program Description**

The Skills Center Middle School Youth Opportunity Program (YO) empowers middle school students by using athletics as a catalyst for academic success, life skills development, mentorship, and holistic health. Through a combination of athletic engagement, academic support, and life-skills mentoring and YO aims to ensure each participant achieves on-time grade promotion.

Our YO program introduces a comprehensive set of resources designed to support both middle school youth and their parents/caregivers. For students, YO promotes academic growth, mental and physical wellness, and the acquisition of essential life skills. For parents and caregivers, the program offers increased access to community resources and information to support their youth's development and overall family well-being.

**Target Population Served:** Middle school-aged youth

**Service Area/Geographic Focus:** Hillsborough County

**Bilingual Services:** Yes – Spanish

**Funding Amount:** \$967,493

### **Contact Information:**

**Address:** 5107 North 22nd Street  
Tampa, FL 33610

**Phone:** (813) 703-1324

**Website:** [www.theskillscenter.org](http://www.theskillscenter.org)

**Social Media:** Facebook – The Skills Center  
Instagram – @theskillscenter

**Subcontracts:** None

## *Family Safety from Domestic Violence*

### **Program Description**

The Family Safety from Domestic Violence program provides case management and support services at the Outreach Office. The program offers safety planning, support groups, linkage to community resources, and assistance with filing injunctions for protection.

**Target Population Served:** Families experiencing domestic violence

**Service Area/Geographic Focus:** Hillsborough County

**Bilingual Services:** Yes – Spanish

**Funding Amount:** \$374,025

### **Contact Information:**

**Address:** 4415 West Osborne Avenue  
Tampa, FL 33614

**Phone:** (813) 749-8764

**Website:** [www.thespring.org](http://www.thespring.org)

**Social Media:** Facebook – The Spring of Tampa Bay  
X – @TheSpringTB  
Instagram – @thespringtb

**Subcontracts:** None



## ***Mobile Health and Safety Education***

### **Program Description**

The Mobile Health and Safety Education program provides services in community-based locations and at Children's Board Family Resource Centers. This program includes both mobile classroom health and safety education and access to medical services through a mobile medical clinic.

The program also provides classes at your site with a focus on educating children in age-appropriate ways that make learning about health and safety fun and educational. Caregiver education is also provided related to CPR/ First Aid certification, car seat safety and so much more. To learn more about our classes offered and to submit a request for services please visit [www.stjoesmobile.org](http://www.stjoesmobile.org).

The Mobile Medical Clinic supports children and families by providing opportunities for caregivers and their children to participate in developmental screening, mobile/medical pediatric health services (including well child visits and immunizations), and hearing/vision screenings.

**Target Population Served:** Children birth through eighteen years of age and their families

**Service Area/Geographic Focus:** Hillsborough County

**Bilingual Services:** Yes – Spanish

**Funding Amount:** \$1,270,438

### **Contact Information:**

**Address:** 4600 North Habana Avenue  
Suite 26  
Tampa, FL 33614

**Phone:** (813) 615-0589

**Website:** [baycare.org/sjch](http://baycare.org/sjch)

**Social Media:** Facebook – St. Joseph's Children's Hospital Foundation  
Instagram – @Baycare

**Subcontracts:** None



***Community Maternity Clinic*****Program Description**

The Community Maternity Clinic provides high-risk prenatal care and monitoring. The program also provides participants with wraparound services such as care coordination, lactation support, dietitian support, education on infant safety, and referrals for services to other resources in the community.

**Target Population Served:** Uninsured or underinsured pregnant women and their families

**Service Area/Geographic Focus:** Hillsborough County

**Bilingual Services:** Yes

**Funding Amount:** \$872,829

**Contact Information:**

**Address:** 4321 North MacDill Avenue  
Suite 205  
Tampa, FL 33607

**Phone:** (813) 356-7711

**Website:** [www.baycare.org](http://www.baycare.org)

**Social Media:** Facebook – St Josephs Womens Hospital  
X – @Baycare  
Instagram – @Baycare

**Subcontracts:** None

***Supporting Motherhood and More***

**Program Description**

Supporting Motherhood and More is an individualized, live telehealth counseling program offered for women (pregnant and postpartum up to two years) who may be experiencing perinatal depression or other mood disorders associated with pregnancy and/or birth. Support groups are led by a clinical social worker.

**Target Population Served:** Uninsured or underinsured pregnant and postpartum women

**Service Area/Geographic Focus:** Hillsborough County

**Bilingual Services:** Telephonic interpreter available if needed

**Funding Amount:** \$202,659

**Contact Information:**

**Address:** 3030 West Dr. Martin Luther King Jr. Boulevard  
Suite 404  
Tampa, FL 33607

**Phone:** (813) 872-3925

**Website:** [www.baycare.org/hospitals/st.josephs-womens-hospital/patients-and-visitor](http://www.baycare.org/hospitals/st.josephs-womens-hospital/patients-and-visitor)

**Social Media:** Facebook – St Josephs Womens Hospital  
X – @Baycare  
Instagram – @Baycare

**Subcontracts:** None

## *Garden and Art Wellness Program*

### **Program Description**

The Garden and Art Wellness (GAW) program uses the arts and mindfulness practices to help support students in their academics and self-esteem development as well as provide their parents/caregivers with community resources and practical applications. GAW activities include mindfulness and exercise in the garden, garden lessons and garden art and reflection activities. The art activities used help students to start to build up their self-esteem by providing the space for self-expression and reflection. For the parents/caregivers, GAW hosts monthly “Family Garden Club” meetings that include family bonding activities as well as presentation about healthy eating, nutrition, and gardening as well as community resources.

**Target Population Served:** Children in grades kindergarten to fifth grade

**Service Area/Geographic Focus:** Students and their parent/guardian or caregiver that lives in, near, and/or attend school in either the Tampa Heights or Highland Pines area

**Bilingual Services:** No

**Funding Amount:** \$123,344

### **Contact Information:**

**Address:** 2005 North Lamar Avenue  
Tampa, FL 33602

**Phone:** (813) 468-3608

**Website:** [www.thjca.org](http://www.thjca.org)

**Social Media:** Facebook – Tampa Heights Junior Civic Association  
Instagram – @thjca  
LinkedIn – Tampa Heights Junior Civic Association

**Subcontracts:** None



## *Kiwanis StoryWalk*

### **Program Description**

Kiwanis StoryWalk® is an initiative from The Kiwanis Club of Tampa to encourage literacy and exercise for children. Kiwanis StoryWalk® displays a storybook along a walking path page-by-page. In order to read the story, families will walk the path and read along.

**Target Population Served:** Parents with Children under seven years of age

**Service Area/Geographic Focus:** Carrollwood Village Park, Rowlett Park, Seffner Comm”UNITY” Park & Garden, and Ruskin Park & Recreational Center

**Bilingual Services:** Yes – Spanish

**Funding Amount:** \$47,965

### **Contact Information:**

**Address:** 4909 Cresthill Drive  
Tampa, FL 33615

**Phone:** (813) 402-8074

**Website:** [www.tampakiwanis.org/storywalk](http://www.tampakiwanis.org/storywalk)

**Social Media:** Facebook – Kiwanis Club of Tampa  
X – @TampaKiwanis  
Instagram – @TampaKiwanis

**Subcontracts:** None

## *Operation Strong Families*

### **Program Description**

Operations Strong Families is a 10-week targeted program designed for active duty and veteran families. Our goal is to make the Tampa YMCA a local destination where these families can grow in health, connectedness, and mental wellness. The program also includes Operation Hero which is an enrichment program designed to address issues faced by many of our military youth. The program is for children who experience academic difficulties and children who demonstrate difficulty dealing with emotions or other barriers. Membership at the YMCA is not required.

**Target Population Served:** Military and veteran families with children in 3rd through 6th grades

**Service Area/Geographic Focus:** Offered at four Tampa YMCA Family Centers, including those near Hillsborough County Public School's Purple Star Schools (South Tampa Family YMCA and Spurlino Family YMCA), and in northern and eastern Hillsborough County (Northwest Hillsborough Family YMCA and North Brandon Family YMCA).

**Bilingual Services:** No

**Funding Amount:** \$164,145

### **Contact Information:**

**Address:** 110 East Oak Avenue  
Tampa, FL 33602

**Phone:** (813) 224-9622 ext.1723

**Website:** [www.tampaymca.org/programs/health-fitness](http://www.tampaymca.org/programs/health-fitness)

**Social Media:** None

**Subcontracts:** None

***Sulphur Springs YMCA Out of School Time***

**Program Description**

The Sulphur Springs YMCA Out of School Time is an after school and summer program to support children in reaching their academic milestones through participation in literacy programs, Science, Technology, Engineering, and Math (STEM) activities, and enrichment clubs.

**Target Population Served:** Kindergarten through 8th grade

**Service Area/Geographic Focus:** Sulphur Springs K-8 Community School

**Bilingual Services:** Yes – Spanish

**Funding Amount:** \$477,261

**Contact Information:**

**Address:** 8412 North 13th Street  
Tampa, FL 33604

**Phone:** (813) 224-9622

**Website:** [www.tampaymca.org](http://www.tampaymca.org)

**Social Media:** Facebook – Tampa Metropolitan Area YMCA  
X – @TampaYMCA  
Instagram – @TampaYMCA

**Subcontracts:** None



## *Children's Board Free Family Day*

### **Program Description**

Children's Board Free Family Day provides free administration into the Tampa Museum of Art for children and their parents or caregivers. Free admission will be offered from 11am to 4pm on the following dates: December 14, 2024, February 1, 2025, May 3, 2025, and August 30, 2025. Families will be able to participate in a day of art, creativity, and fun. Enjoy art making projects, music, performances, gallery activities, refreshments, and more, all inspired by the Museum's exhibitions.

**Target Population Served:** Families with children ages six to fourteen years old

**Service Area/Geographic Focus:** Hillsborough County

**Bilingual Services:** Yes – Spanish

**Funding Amount:** \$57,555

### **Contact Information:**

**Address:** 120 West Gasparilla Plaza  
Tampa, FL 33602

**Phone:** (813) 274-8130

**Website:** [www.TampaMuseum.org](http://www.TampaMuseum.org)

**Social Media:** Facebook – Tampa Museum of Art, Inc.  
X – @TampaMuseumofArt  
Instagram – @TampaMuseumofArt

**Subcontracts:** None



# UNITED FOOD BANK AND SERVICES OF PLANT CITY

*F.E.E.D. Food, Educating, Empowerment for Development*

## **Program Description**

The F.E.E.D Program, determines immediate need for help for parents/caregivers and makes connections with local resources. The program teaches new health and nutrition facts with short, informative, and fun classes that include nutritional food supplies, books for children, and much more. F.E.E.D coordinates with schools and other organizations to increase parent awareness of supplemental food for families in need.

**Target Population Served:** Families with children ages six to fourteen

**Service Area/Geographic Focus:** East Hillsborough County: Brandon (33510, 33511), Dover (33527), Dover/Sydney (33587), Lithia (33547), Plant City (33563, 33564, 33565, 33566, 33567), Riverview (33569, 33578, 33579), Seffner (33584), Thonotosassa (33592), Valrico (33594, 33596), Wimauma (33598)

**Bilingual Services:** Yes – Spanish

**Funding Amount:** \$223,849

## **Contact Information:**

**Address:** 702 East Alsobrook Street  
Plant City, FL 33563

**Phone:** (813) 764-0625 ext. 5

**Website:** [www.ufbpc.org](http://www.ufbpc.org)

**Social Media:** Facebook – United Food Bank and Services  
Instagram – @United Food Bank and Services

**Subcontracts:** None





# UNIVERSITY AREA COMMUNITY DEVELOPMENT CORPORATION

## *Get Moving! Mind, Body, & Soul*

### **Program Description**

The Moving program is a comprehensive wellness program that focuses on improving the health and nutrition of University Area residents, while meeting the individual where they are in life. The program strives to create a suitable living environment to promote neighborhood sustainability, by offering organized sports and educational classes. From indoor basketball leagues to swimming and soccer in the community park, all organized sports are available to residents who are learning for the first time, as well as those who have “been doing it for years”.

**Target Population Served:** Children ages seven to fourteen years old

**Service Area/Geographic Focus:** North Tampa Area

**Bilingual Services:** Yes – Spanish

**Funding Amount:** \$300,701

### **Contact Information:**

**Address:** 14013 North 22nd Street  
Tampa, FL 33613

**Phone:** (813) 558-1149

**Website:** [www.uacdc.org](http://www.uacdc.org)

**Social Media:** Facebook: University Area CDC  
X: @UnivAreaCDC  
Instagram: @UnivAreaCDC

**Subcontracts:** None



***Get Moving! Water Safety***

**Program Description**

Get Moving! Water Safety offers beginner-level swimming lessons at an outdoor pool, with a strong focus on water safety and drowning prevention. Lessons will be tailored for different age groups: infants/toddlers, children ages five to eight, nine to thirteen, and fourteen to eighteen. Each session will combine fundamental swimming skills with critical water safety education. This comprehensive water safety initiative will provide essential knowledge and skills to families and children, significantly reducing the risk of water-related accidents in the community.

**Target Population Served:** Infants through age eighteen

**Service Area/Geographic Focus:** Uptown Sky Apartments

**Bilingual Services:** Yes – Spanish

**Funding Amount:** To be determined

**Contact Information:**

**Address:** 14013 North 22nd Street  
Tampa, FL 33613

**Phone:** (813) 558-5212

**Website:** [www.uacdc.org](http://www.uacdc.org)

**Social Media:** Facebook – University Area CDC  
X – @UnivAreaCDC  
Instagram – @univareacdc  
LinkedIn – University Area CDC

**Subcontracts:** None



# UNIVERSITY AREA COMMUNITY DEVELOPMENT CORPORATION

## *STEPS for the University Area*

### **Program Description**

STEPS for the University Area is a voluntary self-sufficiency program designed to assist individuals/families in becoming economically independent. With the support of local non-profit, faith-based, and local government agencies, STEPS combines case management, education, job training, and ongoing support to assist individuals/families in improving their lives.

**Target Population Served:** Low-income families living in University Area

**Service Area/Geographic Focus:** 33612 and 33613 zip code area

**Bilingual Services:** Yes – Spanish

**Funding Amount:** \$478,926

### **Contact Information:**

**Address:** 14013 North 22nd Street  
Tampa, FL 33613

**Phone:** (813) 558-1149

**Website:** [www.uacdc.org](http://www.uacdc.org)

**Social Media:** Facebook: University Area CDC  
X: @UnivAreaCDC  
Instagram: @UnivAreaCDC

**Subcontracts:** None





## UNIVERSITY OF SOUTH FLORIDA BOARD OF TRUSTEES, THE

### *Helping our Toddlers, Developing our Children's Skills (HOTDOCS) & Developing Our Children's Skills K-5 (DOCS K-5)*

#### **Program Description**

HOT DOCS & DOCS K-5 are parent training programs that teaches caregivers and professionals how to support the social and emotional functioning of their children and to create a safe home environment. HOT DOCS focuses on the needs of young children birth to five years of age, while DOCS K-5 focuses on children five to twelve years of age. Both six-week programs (two-hour weekly sessions) also teach parents/caregivers how to access corresponding community resources. Classes are held in locations throughout the county and offered on-line.

**Target Population Served:** Families with children birth through elementary school age

**Service Area/Geographic Focus:** Hillsborough County

**Bilingual Services:** Yes – Spanish

**Funding Amount:** \$441,957

#### **Contact Information:**

**Address:** 13101 North Bruce B. Downs Boulevard  
Tampa, FL 33612

**Phone:** (813) 974-1048

**Website:** [www.usf.edu/medicine/pediatrics/  
child-development/hotdocs](http://www.usf.edu/medicine/pediatrics/child-development/hotdocs)

**Social Media:** Facebook – DOCS Parents Programs  
Instagram – @DOCSparentingprograms  
LinkedIn – University Area CDC

**Subcontracts:** None



***Hillsborough HIPPY Parent Involvement Project***

**Program Description**

The Hillsborough Home Instruction for Parents of Preschool Youngsters (HIPPY) Parent Involvement Project trains parents and caregivers to prepare their young children for early success in school through an evidence-based school readiness curriculum. HIPPY provides weekly in home visits where parents and caregivers are coached in age appropriate activities, developmental screenings, monthly family education events, and care coordination as needed. The program works with the Center for Autistic and Related Disorders (CARD) to support families with children on the Autism Spectrum.

**Target Population Served:** Family Child Care Homes and parents and caregivers of children birth to five years of age

**Service Area/Geographic Focus:** Hillsborough County

**Bilingual Services:** Yes – Spanish

**Funding Amount:** \$1,823,437

**Contact Information:**

**Address:** 13301 North Bruce B. Downs Boulevard  
MHC #2113A  
Tampa, FL 33612

**Phone:** (813) 974-1048

**Website:** [www.floridahippy.fmhi.usf.edu](http://www.floridahippy.fmhi.usf.edu)

**Social Media:** Facebook – Hillsborough HIPPY Parent Involvement Program

**Subcontracts:** Crisis Center of Tampa Bay

***Program-Wide Positive Behavior Support (PWPBS)***

**Program Description**

Program-Wide Positive Behavior Support (PWPBS) partners with early childhood centers and family child care homes to support social-emotional development in children. Sites receive training, materials, and educational coaching on how to best support all their children with social-emotional skills, while also reducing challenging behavior. Monthly training is also available and open to early childhood educators at locations throughout Hillsborough County.

**Target Population Served:** Early education providers (center-based and family child care homes), administrators, children birth to five years of age and their caregivers/parents

**Service Area/Geographic Focus:** Hillsborough County

**Bilingual Services:** Yes – Spanish and Sign Language

**Funding Amount:** \$988,581

**Contact Information:**

**Address:** 13301 North Bruce B. Downs Boulevard  
MHC #2113A  
Tampa, FL 33612

**Phone:** (813) 974-1455

**Website:** [www.pwpbs.cbcs.usf.edu](http://www.pwpbs.cbcs.usf.edu)

**Social Media:** Facebook – Program-Wide Positive Behavior Support at USF

**Subcontracts:** None

***Trauma-Informed Schools: Tiered Interventions***

**Program Description**

The program provides students, all school faculty, and staff with Effinity Educator Resilience training, mindfulness coaching, and Child-Adult Relationship (CARE) training. Services include CARE coach training, small group skill building to the students, and individualized teacher coaching in the classroom.

**Target Population Served:** Children enrolled in Kindergarten through 8th grade

**Service Area/Geographic Focus:** Children enrolled in Frost Elementary and Giunta Middle School

**Bilingual Services:** Yes – Spanish

**Funding Amount:** \$1,103,906

**Contact Information:**

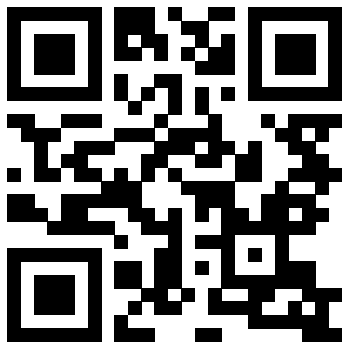
**Address:** 13101 North Bruce B. Downs Boulevard  
Tampa, FL 33612

**Email:** [traumainformedschools@usf.edu](mailto:traumainformedschools@usf.edu)

**Social Media:** None

**Subcontracts:** None





1002 East Palm Avenue • Tampa, FL 33605 • (813) 229-2884